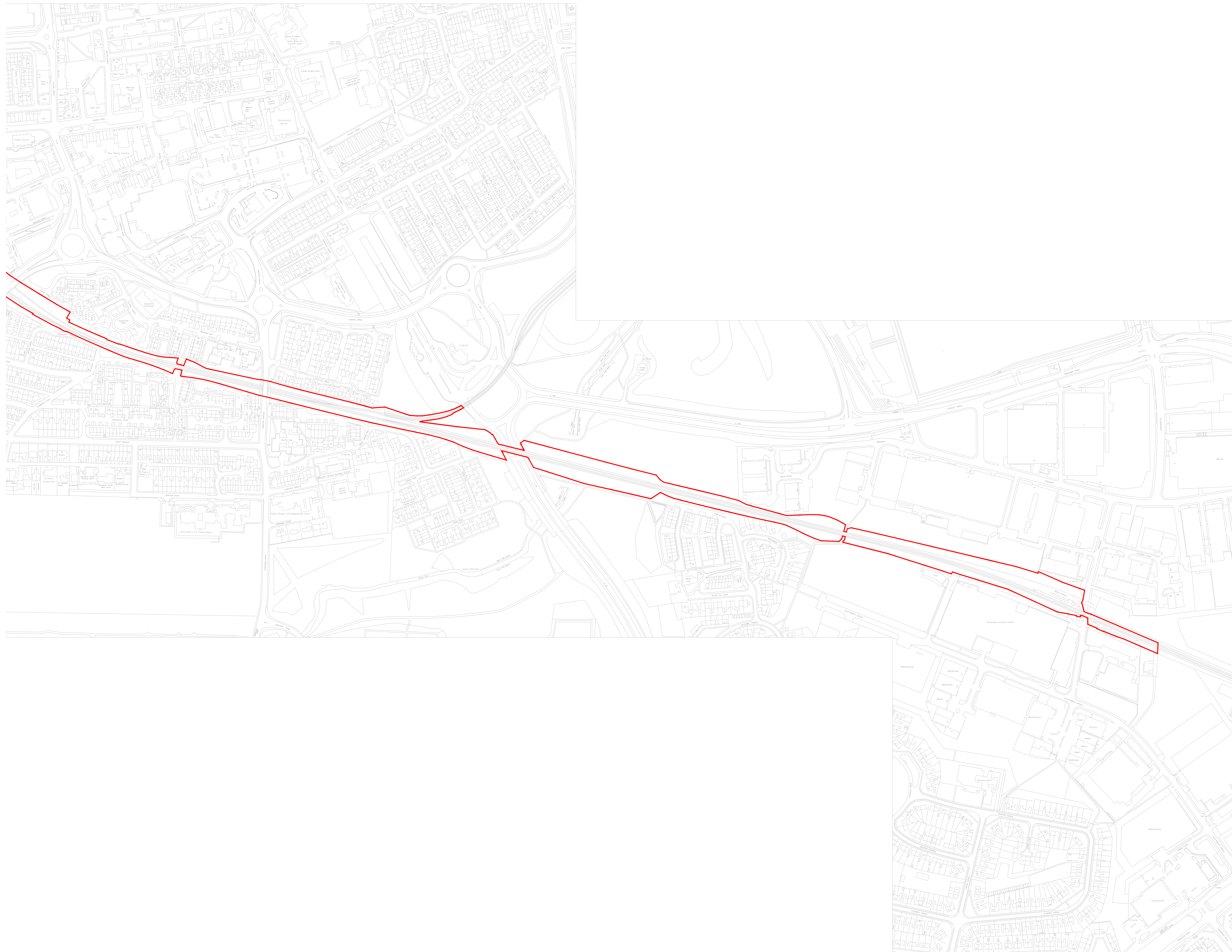


This map is reproduced from Ordnance Survey material with permission of Ordnance Survey on behalf of the controller of Her Majesty's Stationery Office © Crown copyright. Unauthorised reproduction infringes Crown copyright and may lead to prosecution or civil proceedings.  
Nexus, O.S. Licence No. LA08944L © Crown copyright. All rights reserved.

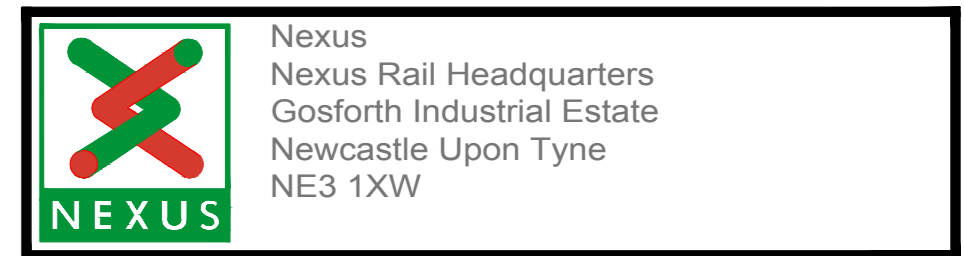
**NOTES**

1. ALL DIMENSIONS ARE IN MILLIMETRES UNLESS NOTED OTHERWISE



Rev	Date	Description	Drwn	Chd	Appd

Do not scale. Uncontrolled when printed. Please advise any anomalies with this drawing to the Nexus Engineering Drawing Office. This drawing is the sole property and copyright of Nexus and may not be disclosed to any third party or reproduced in whole or in part without the prior written consent of an authorised representative of Nexus. Copyright © Nexus

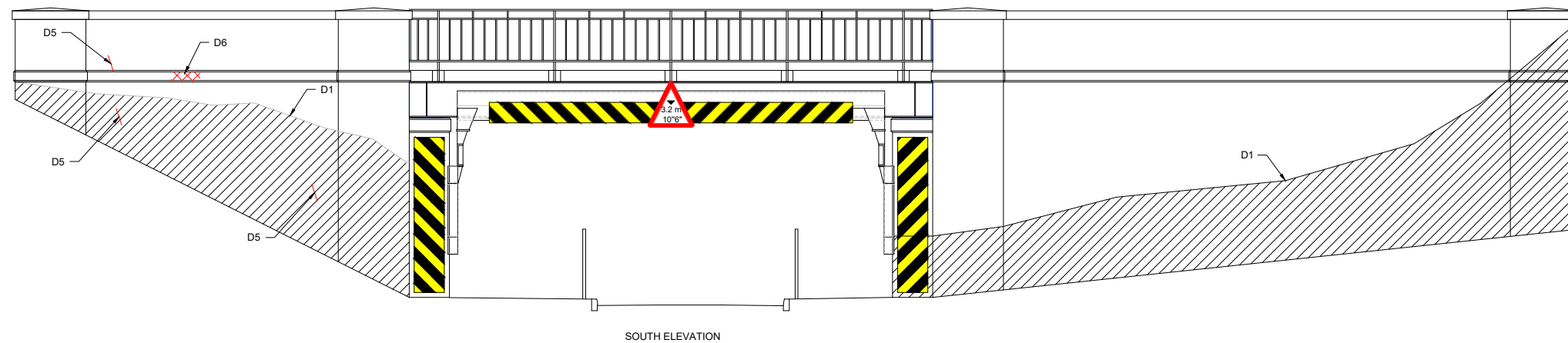


Nexus  
Nexus Rail Headquarters  
Gosforth Industrial Estate  
Newcastle Upon Tyne  
NE3 1XW

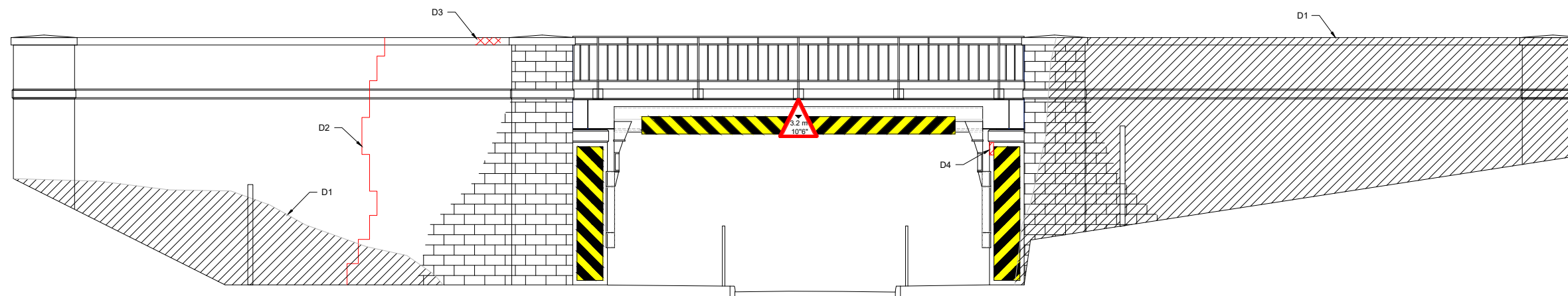
Drawing Status **PLANNING**

Title  
**METRO FLOW  
SOUTH TYNESIDE & GATESHEAD CLOPUD  
REDLINE DRAWING (Sheet 3 of 3)**

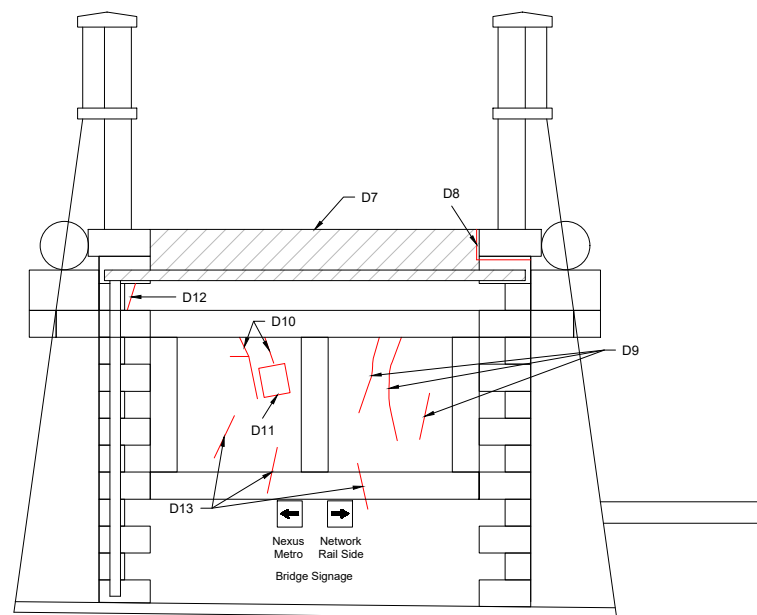
Drawn by	Checked	Approved	Date	Scale
AMCS	TH	CM	10.06.2020	1:2500
Drawing Number				Revision
BB025-20200610-002 (Sheet 3 of 3)				-



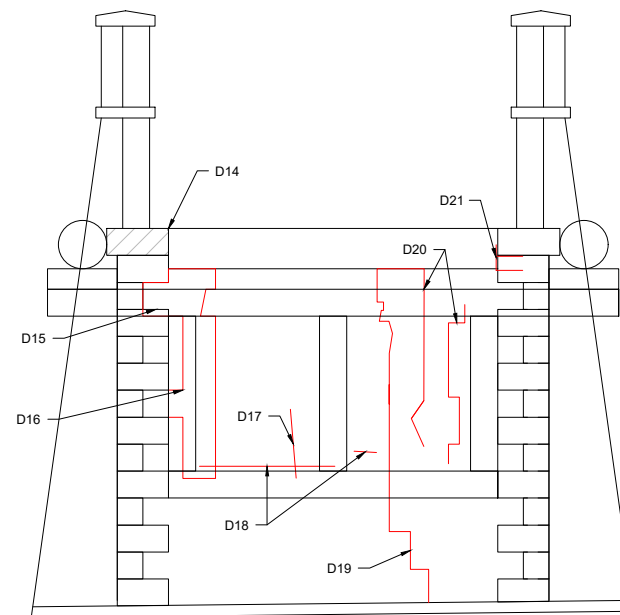
SOUTH ELEVATION



NORTH ELEVATION



LOW MILEAGE ABUTMENT



HIGH MILEAGE ABUTMENT

DEFECTS	
DEFECT REF.	DESCRIPTION
D1	HIDDEN BY VEGETATION, THUS COULD NOT BE INSPECTED. REMOVE VEGETATION TO ALLOW FOR FUTURE INSPECTIONS.
D2	FULL HEIGHT STEPPED VERTICAL FRACTURE OPEN 1-2mm, POINTING REPAIR FAILED, DATE TAB INTACT. REPAIR IN ACCORDANCE WITH NETWORK RAIL STANDARD MASONRY REPAIR DETAILS.
D3	SPALLED COPE STONE 150 x 10 x 120mm DEEP.
D4	VERTICAL FRACTURE BEHIND COLLISION PROTECTION BEAMS STEELWORK, OPEN 1-2mm. REPAIR IN ACCORDANCE WITH NETWORK RAIL STANDARD MASONRY REPAIR DETAILS.
D5	3No. LOCALISED 250mm FRACTURES TO INDIVIDUAL STONWORK, OPEN 1mm.
D6	SPALLING TO STONWORK 210 x 30 x 50mm DEEP.
D7	ACTIVE WATER PENETRATION THROUGHOUT ABUTMENT.
D8	OPEN JOINT SURROUNDING PAD STONE, OPEN 5-10mm.
D9	VERTICAL FRACTURES OF VARYING LENGTHS AND OPEN UP TO A MAXIMUM 5mm.
D10	VERTICAL FRACTURES OF VARYING LENGTHS AND OPEN 2mm.
D11	PATCH REPAIR TO 1No. STONE.
D12	1No. VERTICAL FRACTURE TO INDIVIDUAL STONE.
D13	VERTICAL FRACTURES OF VARYING LENGTHS AND OPEN 1mm.
D14	PADSTONE OVERSAILING 125mm
D15	SPALLING 300 x 300 x 75mm DEEP.
D16	VERTICAL STEPPED FRACTURE IN JOINTS AND STONWORK OPEN 1mm. REPAIR IN ACCORDANCE WITH NETWORK RAIL STANDARD MASONRY REPAIR DETAILS.
D17	VERTICAL FRACTURE TO AN INDIVIDUAL STONE, OPEN 1mm.
D18	HORIZONTAL FRACTURES ADJACENT TO COLLISION PROTECTION BARRIER STEELWORK OPEN 1-2mm.
D19	FULL HEIGHT STEPPED VERTICAL FRACTURE THROUGH JOINTS AND STONWORK OPEN 1-2mm. REPAIR IN ACCORDANCE WITH NETWORK RAIL STANDARD MASONRY REPAIR DETAILS.
D20	VERTICAL STEPPED FRACTURES THROUGH JOINTS AND STONWORK, OPEN 1mm OVER APPROX. 1800mm. REPAIR IN ACCORDANCE WITH NETWORK RAIL STANDARD MASONRY REPAIR DETAILS.
D21	OPEN JOINTS BELOW PAD STONE WITH POINTING REPAIRS EVIDENT BUT DETERIORATING.

- NOTES:**
- DO NOT SCALE FROM THIS DRAWING.
  - REMOVE VEGETATION SURROUNDING STRUCTURE AND ROOT SYSTEMS AFFECTING SUBSTRUCTURES TO ENABLE FUTURE INSPECTIONS.
  - POINTING REPAIRS WHERE NECESSARY IN ACCORDANCE WITH NETWORK RAIL STANDARD MASONRY REPAIR DETAILS.
  - REPAIR/STITCH FRACTURES IN SUBSTRUCTURES IN ACCORDANCE WITH NETWORK RAIL STANDARD MASONRY REPAIR DETAILS.
  - FOLLOWING THE REINTRODUCTION OF FREIGHT TRAFFIC TO ALL LINES A MONITORING REGIME IS TO BE PUT IN PLACE TO CHECK THE EFFECTS OF INCREASED LOADINGS UPON THE SUPERSTRUCTURE AND SUBSTRUCTURES.
  - THIS DRAWING IS TO BE READ IN CONJUNCTION WITH THE FORM A DESIGN DOCUMENT.

- LEGEND:**
- BRICKWORK
  - CHEVRONS
  - HIDDEN BY VEGETATION
  - DEFECTS / FRACTURES

Rev	Date	Description	Drawn	Check	Approv
A02	10/03/20	APPROVED		EQ	CD

Client **NEXUS**

PROJECT: Nexus Metro Flow



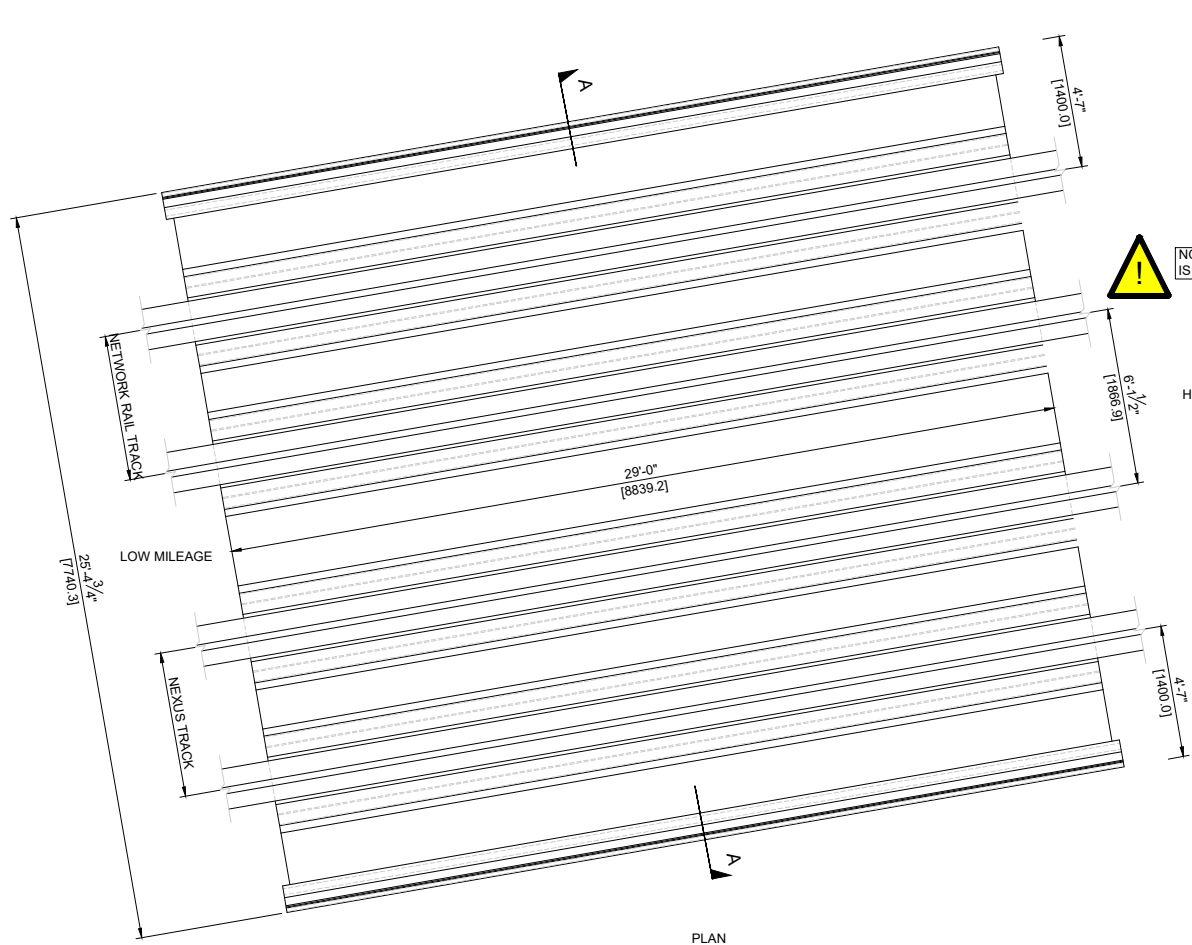
Site: Pelaw to Jarrow  
 Client: Nexus Rail Headquarters, Gosforth Industrial Estate, Christon Road, Newcastle, NE3 1XD, Phone +44 (0) 19120 220 747, Fax, www.nexus.org.uk

**ARCADIS**  
 Registered office: Apollo House, Eboracum Road, York, YO31 7RE  
 Coordinating office: 1st Floor Artemis House, Eboracum Road, York, YO31 7RE, Tel: +44 (0) 1904 380 750, www.arcadis.com

TITLE: 1038 - BLACK ROAD SUBSTRUCTURE DEFECTS

Designed	Drawn	Checked	Approved	Scale	Original Size	ELR	Suitability Code	Signed	Date
E.Quinn	C.Doyle	C.Doyle	C.Doyle	NTS			S2		10/03/20

Suitability Description: **Fit for Information NOT FOR CONSTRUCTION**  
 Drawing Number: 10033113-ARC-00-XX-DR-CE-10001  
 Revision: A02



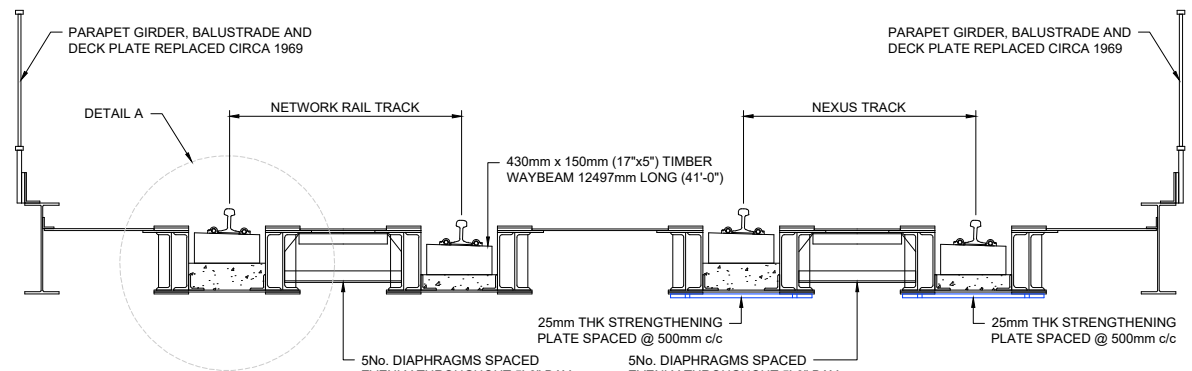
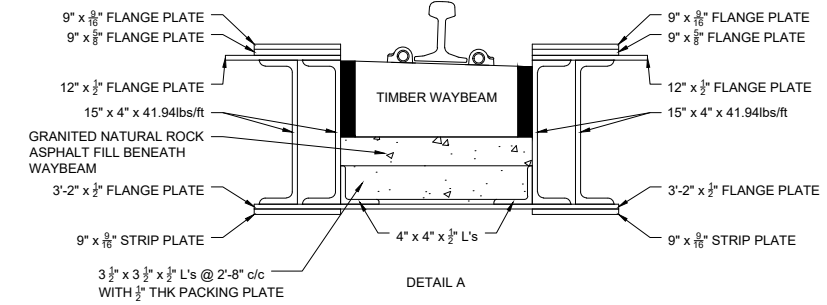
NO CHANGES TO HORIZONTAL ALIGNMENT IS PERMITTED OVER BLACK ROAD.

HIGH MILEAGE

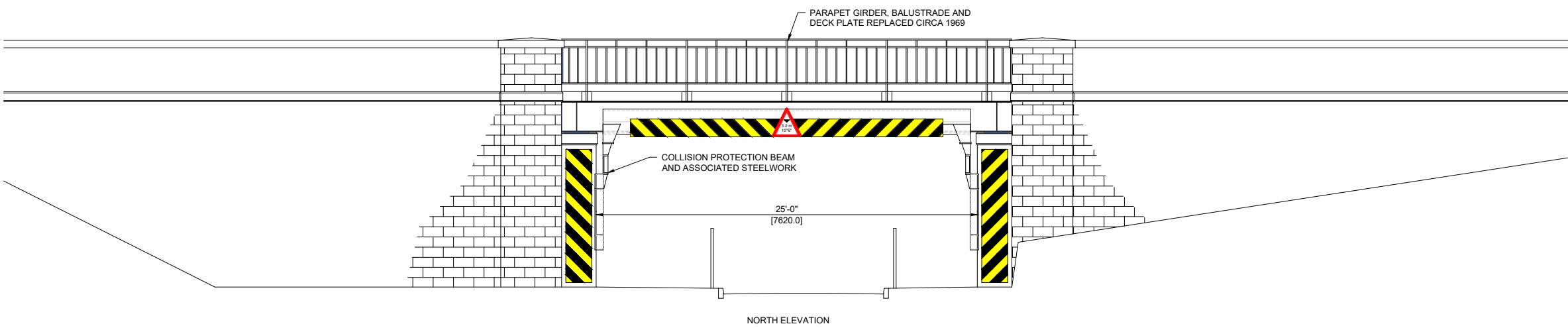
- NOTES:**
1. THE BRIDGE STRUCTURES ARE TO BE CHECKED AND STRENGTHENED/ REFURBISHED WHERE NECESSARY TO ENSURE CAPABLE OF SAFELY CARRYING RA9 TRAFFIC AT 50mph LINE SPEED.
  2. ANY SIGNIFICANT DEFECTS ARE TO BE REPAIRED AS PART OF THE PROPOSED FORM A WORKS.
  3. WHERE TRACK CANT IS REMOVED OVER WAYBEAM BRIDGES ALLOWANCE IS TO BE MADE FOR REMOVAL OF EXISTING TIMBER WAYBEAMS AND REPLACEMENT WITH NEW WAYBEAMS AND FIXINGS HOUSED WITHIN EXISTING METALLIC TROUGHS. THE TRACK ALIGNMENT IS TO BE OPTIMISED TO ENSURE MINIMAL AFFECTS ON SIZES OF TIMBERS AND ASSESSED CAPACITY OF STRUCTURES. FULL FABRICATION DETAILS OF WAYBEAMS BASEPLATES AND INFILL TO METALLIC TROUGHS ARE TO BE SUBMITTED AS PART OF DETAILED FORM B DESIGN.
  4. CRACKS IN ABUTMENTS TO BE STITCHED AND GROUTED IN ACCORDANCE WITH NETWORK RAIL STANDARD DRAWINGS.
  5. ENSURE ALL EXISTING BEARINGS ARE FULLY IN CONTACT AND NOT BOUNCING. CONTRACTOR TO ALLOW FOR GROUTING UP OF BEARING PLATES AND MAKING GOOD TO BEDSTONES AS REQUIRED.
  6. CONFIRM CLEARANCES TO SOFFIT OF STRUCTURE (INCLUDING STRENGTHENING PLATES) AND UPDATE HEIGHT RESTRICTION SIGNAGE AS REQUIRED.
  7. REMOVAL OF ALL VEGETATION ROOT SYSTEMS AFFECTING WING WALLS AND ABUTMENTS TO BE CARRIED OUT BY CONTRACTOR.
  8. ALLOW FOR CLEANING ALL DEBRIS FROM BEARING SHELVES AND CLEANING OF SURFACE WATER DRAINAGE PIPES AND OUTLETS.
  9. EXISTING SURFACE WATER MANHOLES TO BE CLEARED OF DEBRIS.
  10. FOLLOWING REINTRODUCTION OF FREIGHT TRAFFIC TO ALL LINES A MONITORING REGIME IS TO BE PUT IN PLACE TO CHECK THE EFFECTS OF INCREASED LOADINGS UPON THE SUPERSTRUCTURES AND SUBSTRUCTURES. IN THE EVENT OF ANY EXCESSIVE MOVEMENTS OR ADDITIONAL CRACKING NEXUS ASSET ENGINEERS ARE TO BE INFORMED. ADDITIONAL STRENGTHENING OR REMEDIAL MEASURES MAY BE PRESCRIBED.

PLAN

NO CHANGES TO HORIZONTAL ALIGNMENT IS PERMITTED AND CANT TO BE REMOVED OVER BLACK ROAD. TIMBER WAYBEAMS TO BE REPLACED DURING BLOCKADE FOR TRACK DUALLING



REFER TO DWG. CS/089464/1038/04 REV D FOR DETAILS OF STRENGTHENING PLATES.



NORTH ELEVATION

**NOTES:**

1. ALL DIMENSIONS ARE IN MILLIMETRES AND ALL LEVELS ARE IN METRES UNLESS NOTED OTHERWISE.
2. DO NOT SCALE FROM THIS DRAWING.
3. RENEWAL OF TIMBER WAYBEAMS TO BE UNDERTAKEN DURING BLOCKADE FOR TRACK DUALLING WORK.
4. NO / MINIMAL CHANGES TO HORIZONTAL ALIGNMENT IS PERMITTED OVER STRUCTURE WITHIN MAINTENANCE TOLERANCES.
5. EXISTING CANT OVER STRUCTURE TO BE REMOVED IN ACCORDANCE WITH TRACK DESIGN WITH MINIMAL IMPACT ON SIZES OF THE NEW WAYBEAMS.
6. THIS DRAWING IS TO BE READ IN CONJUNCTION WITH THE FORM A DESIGN DOCUMENT.

**LEGEND:**

- BRICKWORK
- CONCRETE
- CHEVRONS

Rev	Date	Description	Drawn	Check	Approv
P01.2	10/03/20	FOR APPROVAL	KB	CD	CD

**Client** NEXUS

**PROJECT:** Nexus Metro Flow

**Site** Pelaw to Jarrow

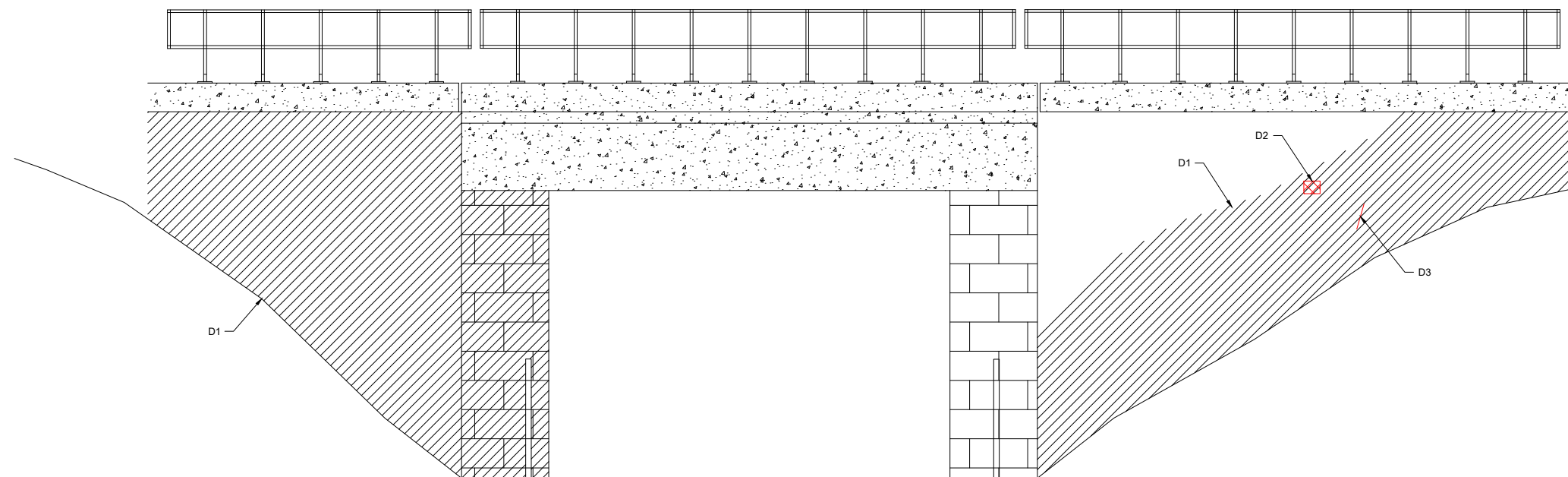
**Client** Nexus Rail Headquarters  
Gosforth Industrial Estate  
Christon Road  
Newcastle, NE3 1XD  
Phone +44 (0) 19120 220 747  
Fax  
www.nexus.org.uk

Registered office: Apollo House, Eboracum Road, York, YO31 7RE  
Coordinating office: 1st Floor Artemis House, Eboracum Road, York, YO31 7RE  
Tel: +44 (0) 1904 380 750  
www.arcadis.com

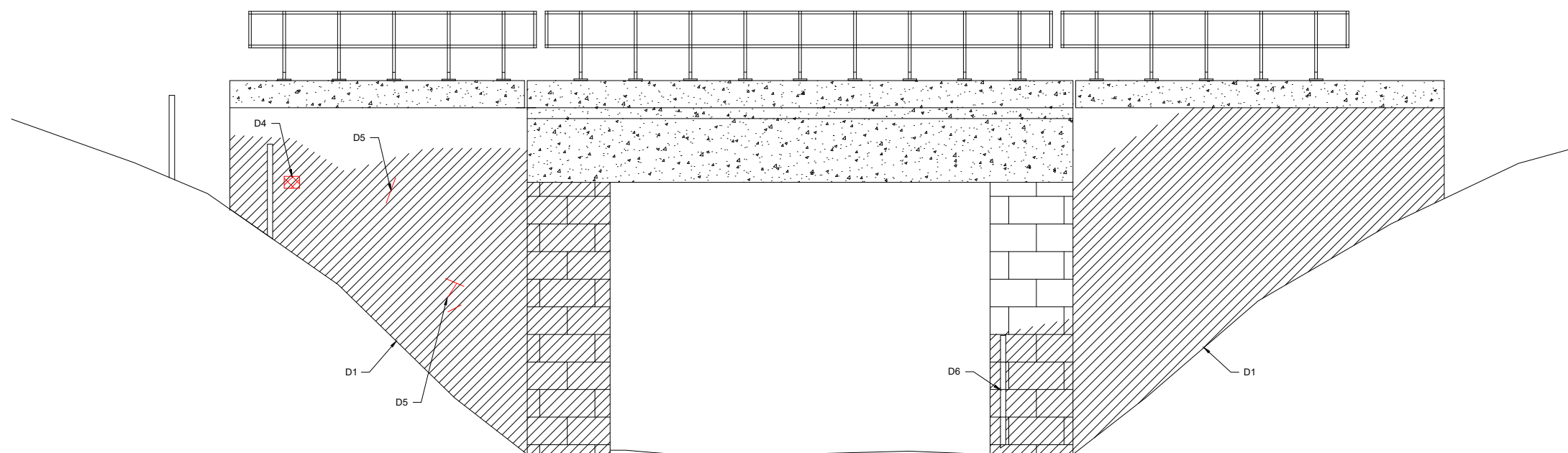
**TITLE:** Black Road - General Arrangement

Designed	Drawn	Checked	Approved	Scale:	Original Size:	ELR:	Suitability Code:	Suitability Description:
K.Baxter	C.Doyle	C.Doyle	C.Doyle	AOD	OS	---	S2	Fit for Information NOT FOR CONSTRUCTION

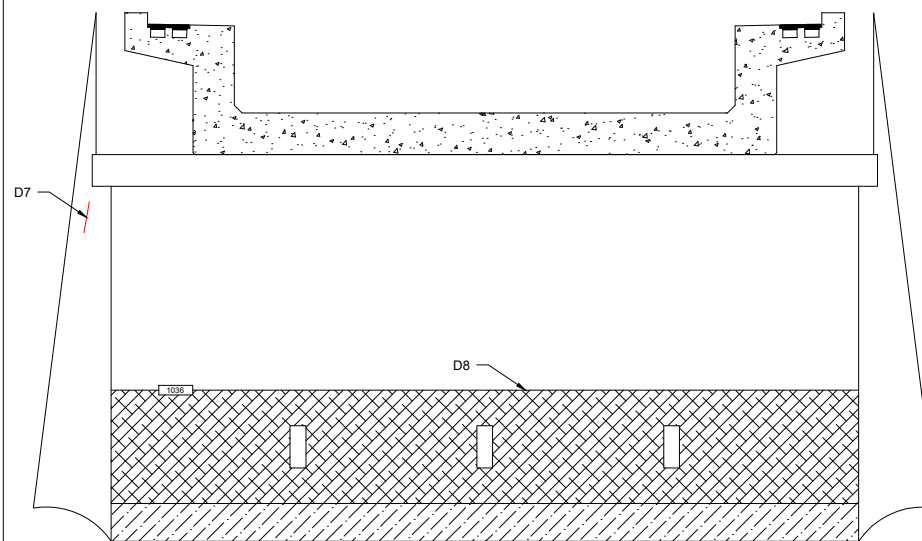
Design	Signat	Date
Drawn	Signat	09/03/20
Checked	Signat	09/03/20
Approved	Signat	10/03/20
Scale:	Datum:	AOD
Original Size:	Grid:	OS
ELR:	Mileage:	---
Suitability Code:	Project Number:	10033113



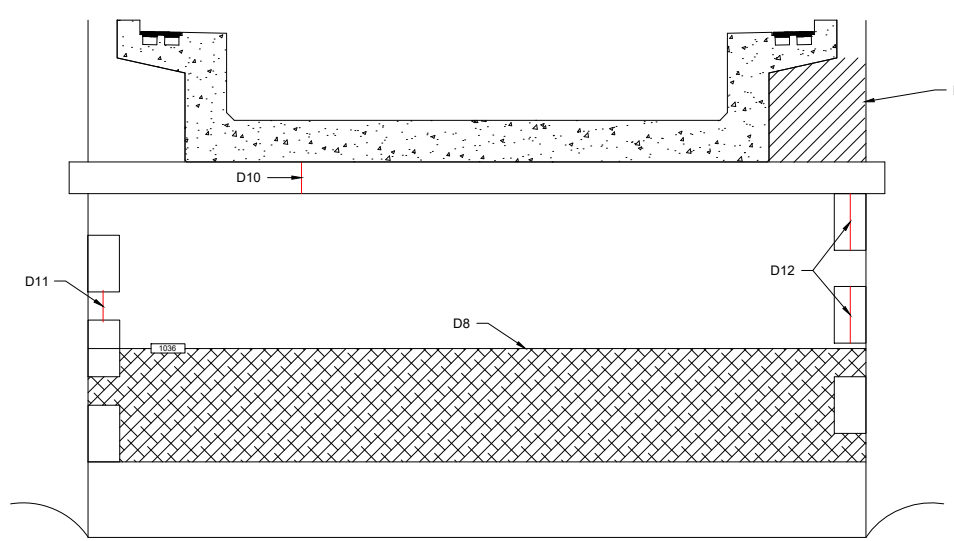
NORTH ELEVATION



SOUTH ELEVATION



LOW MILEAGE ABUTMENT  
ORIGINAL BRICKWORK



HIGH MILEAGE ABUTMENT  
NEW INTEGRAL CONCRETE ABUTMENT

DEFECT REF.	DESCRIPTION
D1	HIDDEN BY VEGETATION, THIS COULD NOT BE INSPECTED. REMOVE VEGETATION TO ALLOW FOR FUTURE INSPECTIONS.
D2	SPALLING TO STONWORK 400 x 170 x 20mm DEEP WITH HAIRLINE VERTICAL FRACTURE OVER 75mm.
D3	VERTICAL FRACTURE OVER 170mm, OPEN 1mm.
D4	SPALLING TO STONWORK 300 x 80 x 100mm DEEP WITH HAIRLINE VERTICAL FRACTURE OVER 75mm.
D5	LOCALISED 170mm FRACTURES THROUGH 3No. STONWORK, OPEN 1mm.
D6	1No. PALISADE PALING MISSING
D7	VERTICAL FRACTURE THROUGH 3No. STONES, OPEN 1mm.
D8	GRAFFITI THROUGH ABUTMENTS. CLEAN ABUTMENTS TO REMOVE GRAFFITI.
D9	LICHEN GROWTH THROUGHOUT LOWER 2 COURSES OF STONWORK.
D10	1No. HAIRLINE VERTICAL FRACTURE THROUGH CILL 420mm LONG.
D11	HAIRLINE TO 2mm VERTICAL FRACTURES THROUGH JOINTS OF STONE CLADDING OVER 4500mm ADJACENT TO SOUTH WINGWALL.
D12	OPEN JOINTS OF STONE CLADDING ADJACENT TO NORTH WINGWALL

**NOTES:**

- DO NOT SCALE FROM THIS DRAWING.
- REMOVE VEGETATION SURROUNDING STRUCTURE AND ROOT SYSTEMS AFFECTING SUBSTRUCTURES TO ENABLE FUTURE INSPECTIONS.
- POINTING REPAIRS WHERE NECESSARY IN ACCORDANCE WITH NETWORK RAIL STANDARD MASONRY REPAIR DETAILS.
- REPAIR/STITCH FRACTURES IN SUBSTRUCTURES IN ACCORDANCE WITH NETWORK RAIL STANDARD MASONRY REPAIR DETAILS.
- FOLLOWING THE REINTRODUCTION OF FREIGHT TRAFFIC TO ALL LINES A MONITORING REGIME IS TO BE PUT IN PLACE TO CHECK THE EFFECTS OF INCREASED LOADINGS UPON THE SUPERSTRUCTURE AND SUBSTRUCTURES.
- THIS DRAWING IS TO BE READ IN CONJUNCTION WITH THE FORM A DESIGN DOCUMENT.

**LEGEND:**

- BRICKWORK
- HIDDEN BY VEGETATION
- DEFECTS / FRACTURES
- GRAFFITI

Rev	Date	Description	Drawn	Check	Approv
A02	10/03/20	APPROVED		EQ	CD

Client **NEXUS**

PROJECT:  
Nexus Metro Flow



Site Pelaw to Jarrow  
Client Nexus Rail Headquarters  
Gosforth Industrial Estate  
Christon Road  
Newcastle, NE3 1XD  
Phone +44 (0) 19120 220 747  
Fax  
www.nexus.org.uk



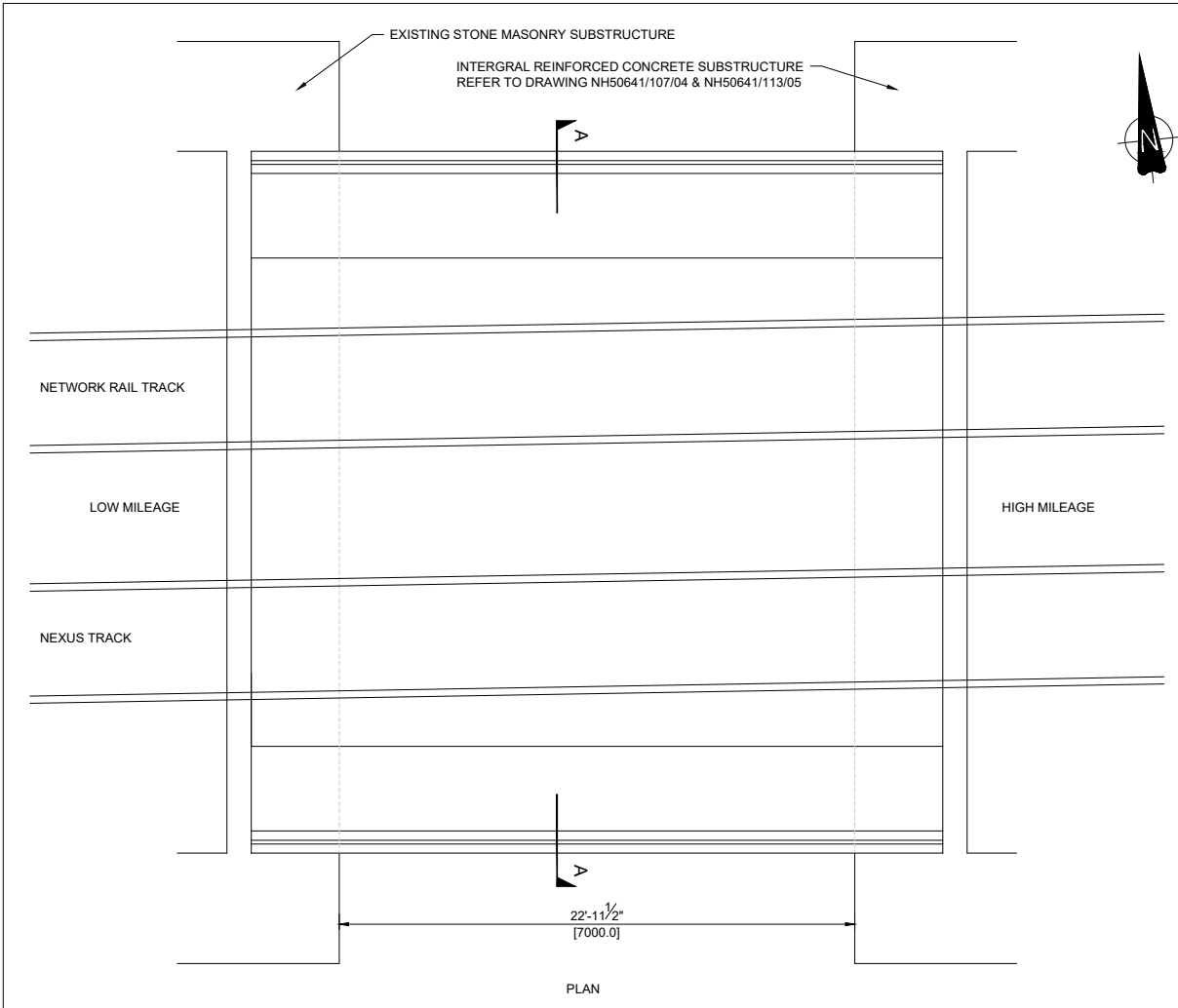
Registered office: Apollo House  
Eboracum Road  
York, YO31 7RE  
Coordinating office: 1st Floor Artemis House  
Eboracum Road  
York, YO31 7RE  
Tel: +44 (0) 1904 380 750  
www.arcadis.com

TITLE: 1036 - POTTER STREET  
SUBSTRUCTURE DEFECTS

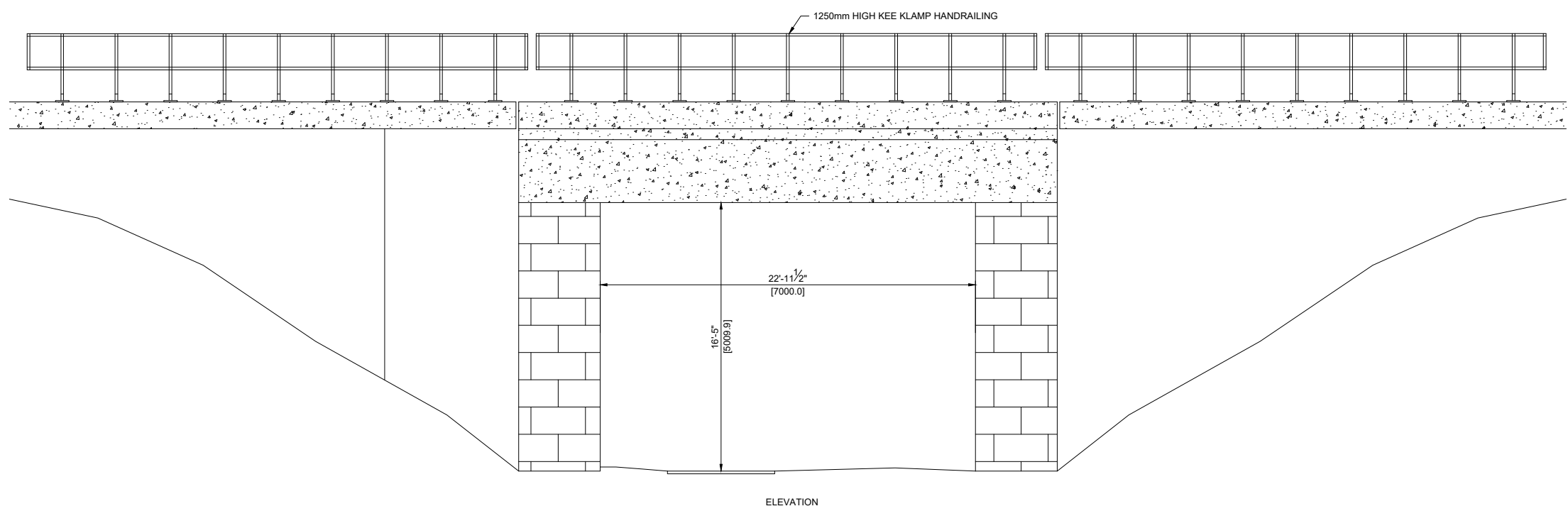
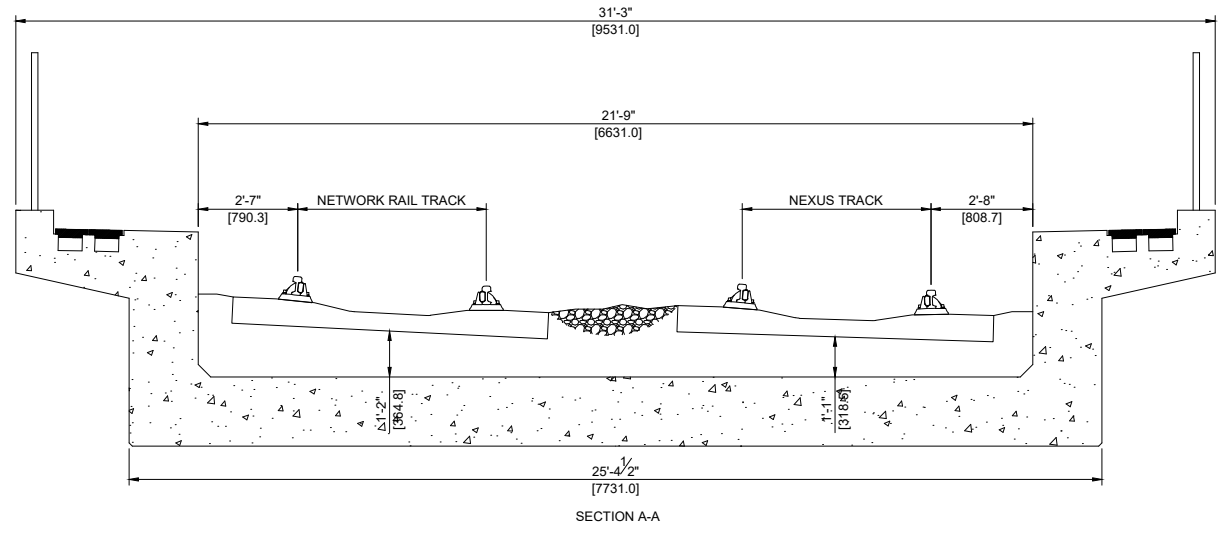
Drawn	Checked	Approved	Scale	Original Size	ELR	Suitability Code	Suitability Description
E. Quinn	C. Doyle	C. Doyle	NTS			S2	

Fit for Information  
NOT FOR CONSTRUCTION

Drawing Number:	Revision:
10033113-ARC-00-XX-DR-CE-20001	A02



- NOTES:**
1. THE BRIDGE STRUCTURES ARE TO BE CHECKED AND STRENGTHENED/ REFURBISHED WHERE NECESSARY TO ENSURE CAPABLE OF SAFELY CARRYING RA9 TRAFFIC AT 50mph LINE SPEED.
  2. ANY SIGNIFICANT DEFECTS ARE TO BE REPAIRED AS PART OF THE PROPOSED FORM A WORKS.
  3. INSTALL DATUM PLATES OVER STRUCTURE.
  4. CRACKS IN ABUTMENTS TO BE STITCHED AND GROUTED IN ACCORDANCE WITH NETWORK RAIL STANDARD DRAWINGS.
  5. ENSURE ALL EXISTING BEARINGS ARE FULLY IN CONTACT AND NOT BOUNCING. CONTRACTOR TO ALLOW FOR GROUTING UP OF BEARING PLATES AND MAKING GOOD TO BEDSTONES AS REQUIRED.
  6. REMOVAL OF ALL VEGETATION ROOT SYSTEMS AFFECTING WING WALLS AND ABUTMENTS TO BE CARRIED OUT BY CONTRACTOR.
  7. ALLOW FOR CLEANING ALL DEBRIS FROM BEARING SHELVES AND CLEANING OF SURFACE WATER DRAINAGE PIPES AND OUTLETS.
  8. EXISTING SURFACE WATER MANHOLES TO BE CLEARED OF DEBRIS.
  9. FOLLOWING REINTRODUCTION OF FREIGHT TRAFFIC TO ALL LINES A MONITORING REGIME IS TO BE PUT IN PLACE TO CHECK THE EFFECTS OF INCREASED LOADINGS UPON THE SUPERSTRUCTURES AND SUBSTRUCTURES. IN THE EVENT OF ANY EXCESSIVE MOVEMENTS OR ADDITIONAL CRACKING NEXUS ASSET ENGINEERS ARE TO BE INFORMED. ADDITIONAL STRENGTHENING OR REMEDIAL MEASURES MAY BE PRESCRIBED.




- NOTES:**
1. ALL DIMENSIONS ARE IN MILLIMETRES AND ALL LEVELS ARE IN METRES UNLESS NOTED OTHERWISE.
  2. DO NOT SCALE FROM THIS DRAWING.
  3. INSTALL DATUM PLATES OVER THE STRUCTURE.
  4. CHANGES IN VERTICAL AND HORIZONTAL ALIGNMENT IS PERMITTED OVER THE STRUCTURE. HOWEVER, IS TO BE LIMITED TO ENSURE THE STRUCTURES LOAD CARRYING CAPACITY ISN'T COMPROMISED.
  5. NEW TRACK LAYOUT OVER STRUCTURE TO ENSURE COMPLIANCE WITH GAUGING REQUIREMENTS AND MINIMUM BALLAST LEVELS ARE MAINTAINED.
  6. THIS DRAWING IS TO BE READ IN CONJUNCTION WITH THE FORM A DESIGN DOCUMENT.

- LEGEND:**
- BRICKWORK
  - CONCRETE

Rev	Date	Description	Drawn	Check	Approv
P01.2	10/03/20				

**Client** NEXUS

**PROJECT:** Nexus Metro Flow



**Site** Pelaw to Jarrow

**Client** Nexus Rail Headquarters  
Gosforth Industrial Estate  
Christon Road  
Newcastle, NE3 1XD  
Phone +44 (0) 19120 220 747  
Fax  
www.nexus.org.uk



Registered office: Apollo House  
Eboracum Road  
York, YO31 7RE

Coordinating office: 1st Floor Artemis House  
Eboracum Road  
York, YO31 7RE  
Tel: +44 (0) 1904 380 750

www.arcadis.com

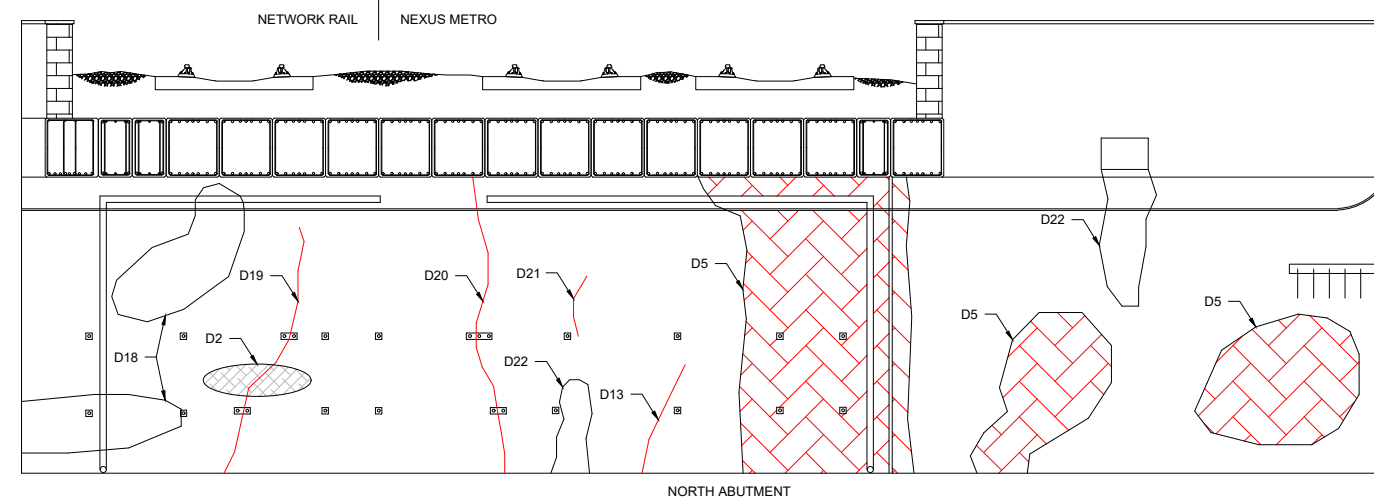
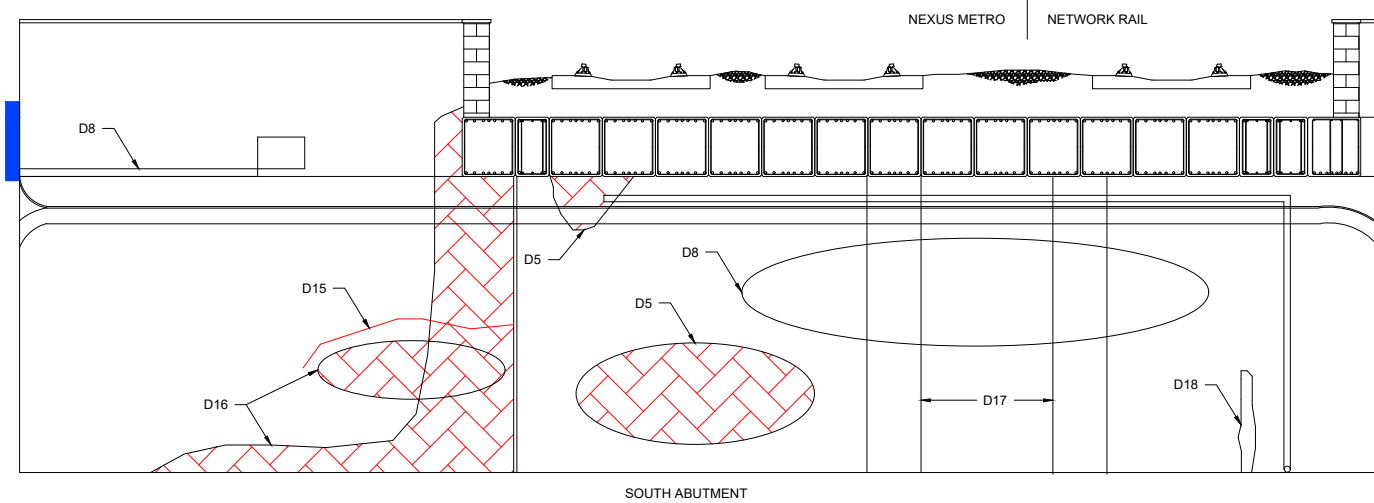
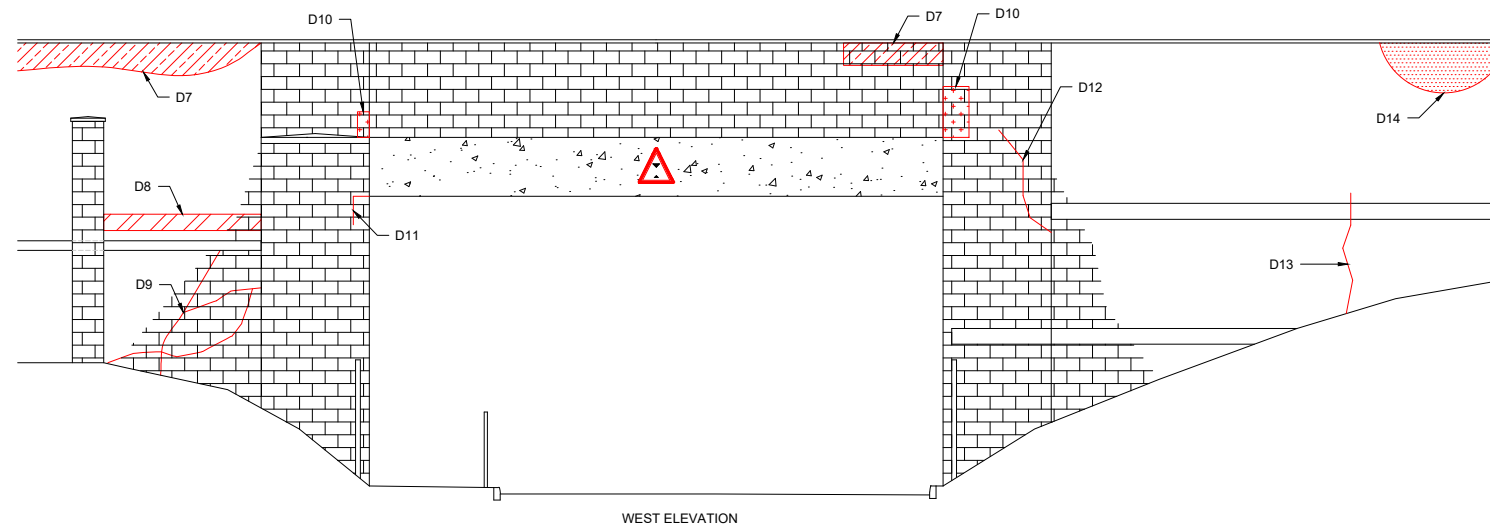
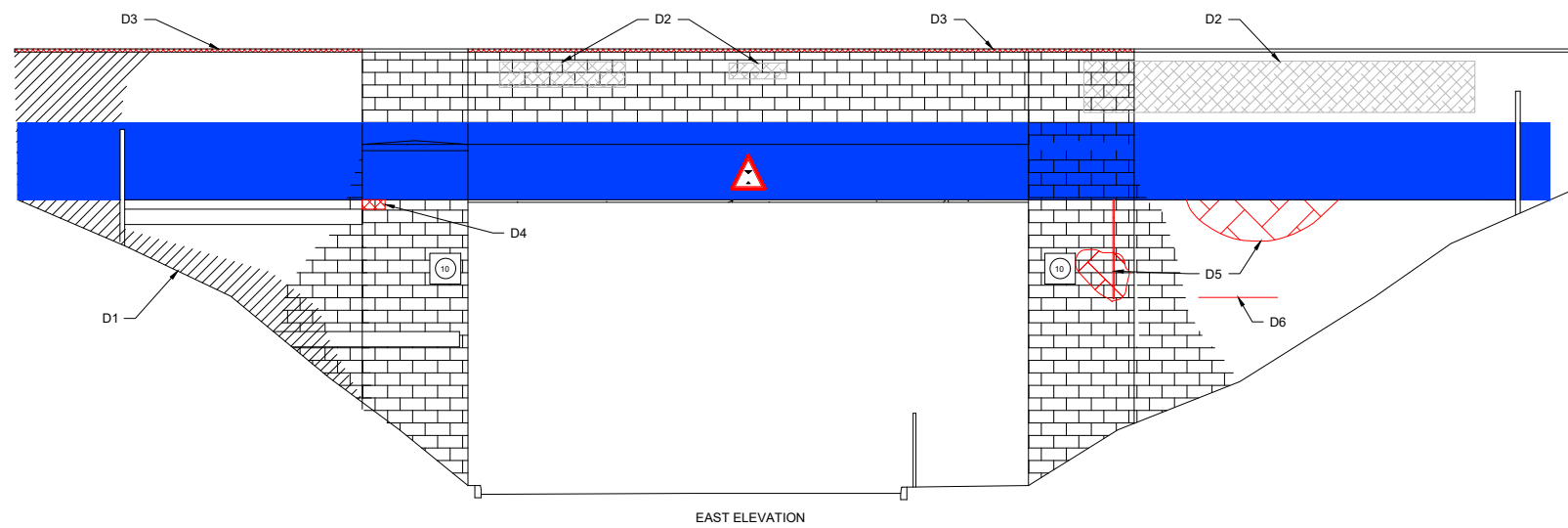
**TITLE:** 1036 - POTTER STREET  
GENERAL ARRANGEMENT

Designated	Signature	Date
Drawn	K.Baxter	09/03/20
Checked	C.Doyle	10/03/20
Approved	C.Doyle	10/03/20
Scale:	NTS	Datum: AOD
Original Size:		Grid: OS
ELR:		Mileage: _____
Suitability Code: S2	Project Number: 10033113	

**Fit for Information**  
NOT FOR CONSTRUCTION

Drawing Number: 10033113-ARC-00-XX-DR-CE-20002

Revision: P01.2



DEFECT REF.	DESCRIPTION
D1	HIDDEN BY VEGETATION, THIS COULD NOT BE INSPECTED. REMOVE VEGETATION TO ALLOW FOR FUTURE INSPECTIONS.
D2	GRAFFITI EVIDENT TO BRICKWORK. CLEAN BRICKWORK TO REMOVE GRAFFITI.
D3	MISSING COPE STONES. TO BE REPLACED WITH LIKE FOR LIKE COPES.
D4	LOCALISED SPALLING OF BRICKWORK OVER 2No. LAYERS.
D5	WATER PENETRATION AND STAINING WITH AREAS OF DRUMMY BRICKWORK.
D6	HORIZONTAL DEEP SPALLING WITH OPEN JOINTS EVIDENT. POINTING REPAIRS IN ACCORDANCE WITH NETWORK RAIL STANDARD MASONRY REPAIR DETAILS.
D7	OPEN JOINTS AND MORTAR LOSS EVIDENT.
D8	BRICKWORK BLACKENED AND DRUMMY.
D9	A SERIES OF STEPPED FRACTURES WITH CALCITE STAINING. STITCHING OF FRACTURES IN ACCORDANCE WITH NETWORK RAIL STANDARD MASONRY REPAIR DETAILS.
D10	BRICKWORK REPAIR THROUGH SEVERAL LAYERS.
D11	LOCALISED DISPLACEMENT OF BRICKWORK AND POINTING REPAIRS EVIDENT BUT APPEAR TO BE FAILING. REPAIRS IN ACCORDANCE WITH NETWORK RAIL STANDARD MASONRY REPAIR DETAILS.
D12	1No. STEPPED HAIRLINE VERTICAL FRACTURE THROUGH 12No. LAYERS OF BRICKWORK.
D13	1No. VERTICAL FRACTURE THROUGH 20No. LAYERS OF BRICKWORK, OPEN 5mm.
D14	LOCALISED BULGING OF WINGWALL. REPAIR IN ACCORDANCE WITH NETWORK RAIL STANDARD MASONRY REPAIR DETAILS.
D15	HORIZONTAL FRACTURE EXTENDING FROM CONSTRUCTION JOINT IN ABUTMENT.
D16	PAINT SPLASHES ON ABUTMENT WITH ACTIVE WATER PENETRATION AND DRUMMY BRICKWORK EVIDENT.
D17	FULL HEIGHT COLUMN OF ACTIVE WATER PENETRATION, WET AT TIME OF INSPECTION INDICATING A LOCALISED FAILURE IN THE WATERPROOFING SYSTEM.
D18	LOCALISED STRIP OF CALCITE STAINING WITH OPEN JOINTS / MORTAR LOSS.
D19	1/2 HEIGHT STEPPED HAIRLINE VERTICAL FRACTURE THROUGH JOINTS AND BRICKWORK. SMALL PATRESS PLATES INSTALLED TO ARREST FURTHER DETERIORATION. CONSIDERATION TO REPAIR IN ACCORDANCE WITH NETWORK RAIL STANDARD MASONRY REPAIR DETAILS.
D20	FULL HEIGHT VERTICAL STEPPED FRACTURE THROUGH JOINTS AND BRICKWORK, OPEN 2-3mm. SMALL PATRESS PLATES INSTALLED TO ARREST FURTHER DETERIORATION. CONSIDERATION TO REPAIR IN ACCORDANCE WITH NETWORK RAIL STANDARD MASONRY REPAIR DETAILS.
D21	HAIRLINE VERTICAL FRACTURE THROUGH 10No. COURSES OF BRICKWORK.
D22	ACTIVE WATER PENETRATION AND STAINING.

**NOTES:**

- DO NOT SCALE FROM THIS DRAWING.
- REMOVE VEGETATION SURROUNDING STRUCTURE AND ROOT SYSTEMS AFFECTING SUBSTRUCTURES TO ENABLE FUTURE INSPECTIONS.
- POINTING REPAIRS WHERE NECESSARY IN ACCORDANCE WITH NETWORK RAIL STANDARD MASONRY REPAIR DETAILS.
- REPAIR/STITCH FRACTURES IN SUBSTRUCTURES IN ACCORDANCE WITH NETWORK RAIL STANDARD MASONRY REPAIR DETAILS.
- FOLLOWING THE REINTRODUCTION OF FREIGHT TRAFFIC TO ALL LINES A MONITORING REGIME IS TO BE PUT IN PLACE TO CHECK THE EFFECTS OF INCREASED LOADINGS UPON THE SUPERSTRUCTURE AND SUBSTRUCTURES.
- THIS DRAWING IS TO BE READ IN CONJUNCTION WITH THE FORM A DESIGN DOCUMENT.

**LEGEND:**

- BRICKWORK
- HIDDEN BY VEGETATION
- DEFECTS / FRACTURES
- GRAFFITI

Rev	Date	Description	Drawn	Check	Approv
A02	10/03/20	APPROVED		EQ	CD

**Client** NEXUS

**PROJECT:**  
Nexus Metro Flow



**Site** Pelsaw to Jarrow  
**Client** Nexus Rail Headquarters  
Gosforth Industrial Estate  
Christon Road  
Newcastle, NE3 1XD  
Phone +44 (0) 19120 220 747  
Fax  
www.nexus.org.uk

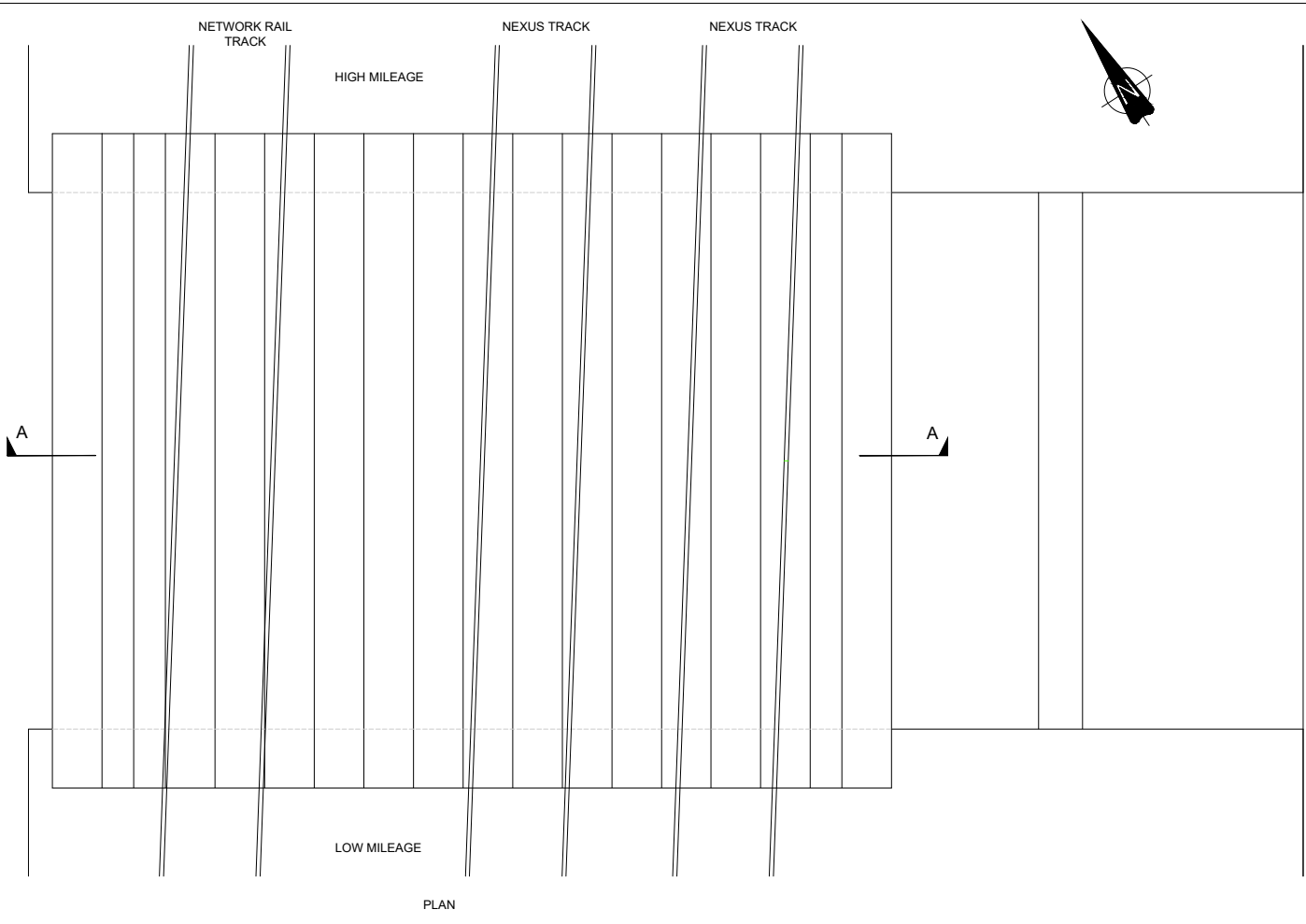
**ARCADIS**  
Registered office: Apollo House, Eboracum Road, York, YO31 7RE  
Coordinating office: 1st Floor Artemis House, Eboracum Road, York, YO31 7RE  
Tel: +44 (0) 1904 380 750  
www.arcadis.com

**TITLE:** 1041 - REYROLLE  
SUBSTRUCTURE DEFECTS

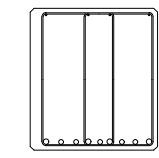
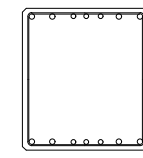
Designed	Drawn	Checked	Approved	Scale	Original Size	ELR	Suitability Code	Suitability Description
E.Quinn	C.Doyle	C.Doyle	C.Doyle	NTS	OS		S2	Project Number: 10033113

**Fit for Information**  
NOT FOR CONSTRUCTION

Drawing Number:	Revision:
10033113-ARC-00-XX-DR-CE-30001	A02



- NOTES:**
1. THE BRIDGE STRUCTURES ARE TO BE CHECKED AND STRENGTHENED/ REFURBISHED WHERE NECESSARY TO ENSURE CAPABLE OF SAFELY CARRYING RA9 TRAFFIC AT 50mph LINE SPEED.
  2. ANY SIGNIFICANT DEFECTS ARE TO BE REPAIRED AS PART OF THE PROPOSED FORM A WORKS.
  3. INSTALL DATUM PLATES OVER STRUCTURE.
  4. CRACKS IN ABUTMENTS TO BE STITCHED AND GROUDED IN ACCORDANCE WITH NETWORK RAIL STANDARD DRAWINGS.
  5. ENSURE ALL EXISTING BEARINGS ARE FULLY IN CONTACT AND NOT BOUNCING. CONTRACTOR TO ALLOW FOR GROUDED UP OF BEARING PLATES AND MAKING GOOD TO BEDSTONES AS REQUIRED.
  6. REMOVAL OF ALL VEGETATION ROOT SYSTEMS AFFECTING WING WALLS AND ABUTMENTS TO BE CARRIED OUT BY CONTRACTOR.
  7. ALLOW FOR CLEANING ALL DEBRIS FROM BEARING SHELVES AND CLEANING OF SURFACE WATER DRAINAGE PIPES AND OUTLETS.
  8. EXISTING SURFACE WATER MANHOLES TO BE CLEARED OF DEBRIS.
  9. FOLLOWING REINTRODUCTION OF FREIGHT TRAFFIC TO ALL LINES A MONITORING REGIME IS TO BE PUT IN PLACE TO CHECK THE EFFECTS OF INCREASED LOADINGS UPON THE SUPERSTRUCTURES AND SUBSTRUCTURES. IN THE EVENT OF ANY EXCESSIVE MOVEMENTS OR ADDITIONAL CRACKING NEXUS ASSET ENGINEERS ARE TO BE INFORMED. ADDITIONAL STRENGTHENING OR REMEDIAL MEASURES MAY BE PRESCRIBED.



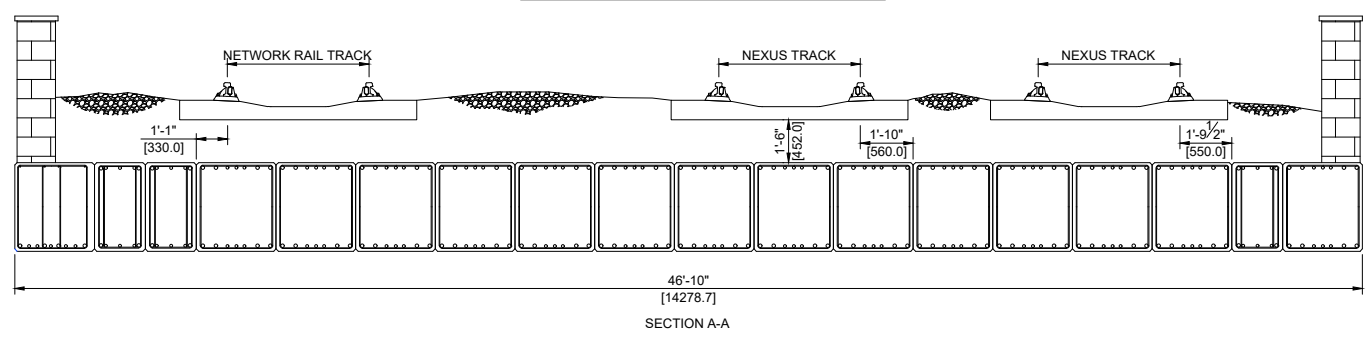
- NOTES:**
1. ALL DIMENSIONS ARE IN MILLIMETRES AND ALL LEVELS ARE IN METRES UNLESS NOTED OTHERWISE.
  2. DO NOT SCALE FROM THIS DRAWING.
  3. INSTALL DATUM PLATES OVER THE STRUCTURE.
  4. CHANGES IN VERTICAL AND HORIZONTAL ALIGNMENT IS PERMITTED OVER THE STRUCTURE. HOWEVER, IS TO BE LIMITED TO ENSURE THE STRUCTURES LOAD CARRYING CAPACITY ISN'T COMPROMISED.
  5. NEW TRACK LAYOUT OVER STRUCTURE TO ENSURE COMPLIANCE WITH GAUGING REQUIREMENTS AND MINIMUM BALLAST LEVELS ARE MAINTAINED.
  6. THIS DRAWING IS TO BE READ IN CONJUNCTION WITH THE FORM A DESIGN DOCUMENT.

- LEGEND:**
- BRICKWORK
  - CONCRETE

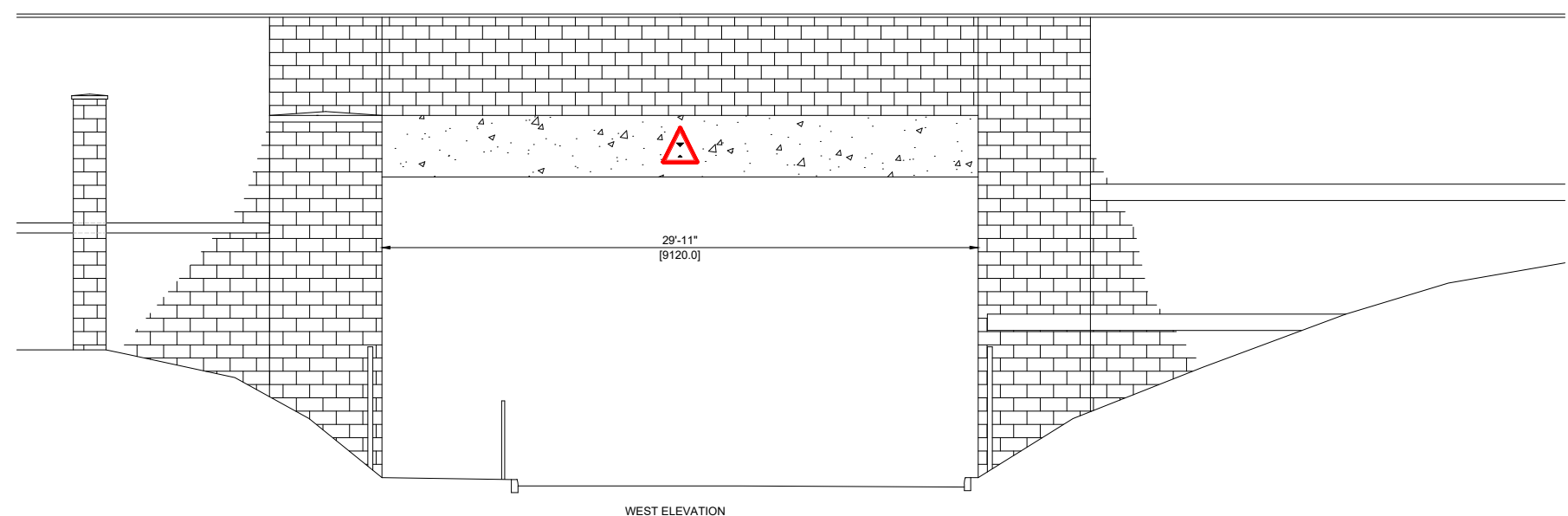
Rev	Date	Description	Drawn	Check	Approv
P01.2	10/03/20				



CHANGES TO VERTICAL AND HORIZONTAL ALIGNMENT IS PERMITTED OVER STRUCTURE. HOWEVER, THESE ARE TO BE LIMITED TO AVOID NEGATIVELY IMPACTING THE STRUCTURES LOAD CARRYING CAPACITY.



- FOR REINFORCEMENT DETAILS REFER TO THE FOLLOWING ARCHIVE DRAWINGS:
- 80-YB-2 - PELAW - SOUTHSHIELDS BRANCH UB 2B AT HEBBURN - PROVISION OF ADDITIONAL DECKING FOR TYNE AND WEAR METRO, DATED 01/05/1980
  - 80-YB-2 - PELAW - SOUTHSHIELDS BRANCH UB 2B AT HEBBURN - PROVISION OF ADDITIONAL DECKING FOR TYNE AND WEAR METRO, UNDATED
  - 18158.01 - REYROLLE BRIDGE - INTRUSIVE INVESTIGATIONS - BEAM 1 (BEAM TYPE B) BY IAN FARMER ASSOCIATES ON BEHALF OF WSP, DATED AUGUST 2017
  - 18158.02 - REYROLLE BRIDGE - INTRUSIVE INVESTIGATIONS - BEAM 2 (BEAM TYPE A) BY IAN FARMER ASSOCIATES ON BEHALF OF WSP, DATED AUGUST 2017
  - 18158.03 - REYROLLE BRIDGE - INTRUSIVE INVESTIGATIONS - BEAM 4 (NEW BEAM / BEAM TYPE C) BY IAN FARMER ASSOCIATES ON BEHALF OF WSP, DATED AUGUST 2017



**Client** NEXUS

**PROJECT:** Nexus Metro Flow

**Site:** Pelaw to Jarrow

**Client:** Nexus Rail Headquarters  
Gosforth Industrial Estate  
Christon Road  
Newcastle, NE3 1XD  
Phone +44 (0) 19120 220 747  
Fax  
www.nexus.org.uk

**ARCADIS**

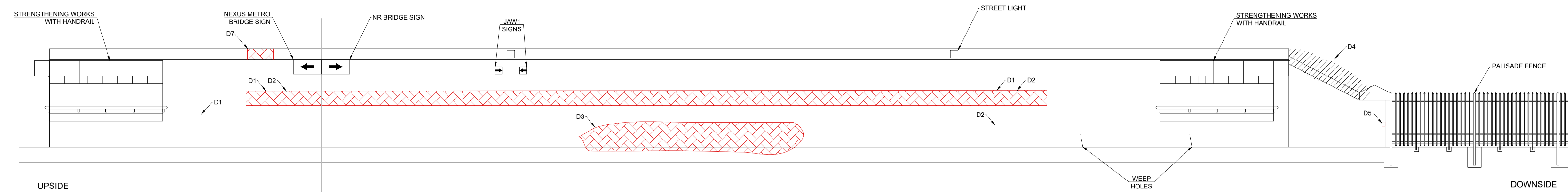
Registered office: Apollo House, Eboracum Road, York, YO31 7RE  
Coordinating office: 1st Floor Artemis House, Eboracum Road, York, YO31 7RE  
Tel: +44 (0) 1904 380 750  
www.arcadis.com

**TITLE:** 1041 - Reyrolle General Arrangement

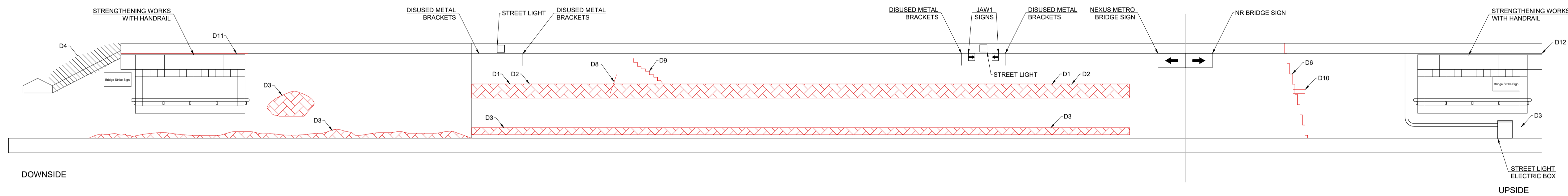
Designated	Drawn	Checked	Approved	Scale:	Original Size:	ELR:	Suitability Code:	Suitability Description:
	K.Baxter	C.Doyle	C.Doyle	NTS			S2	

**Fit for Information**  
NOT FOR CONSTRUCTION

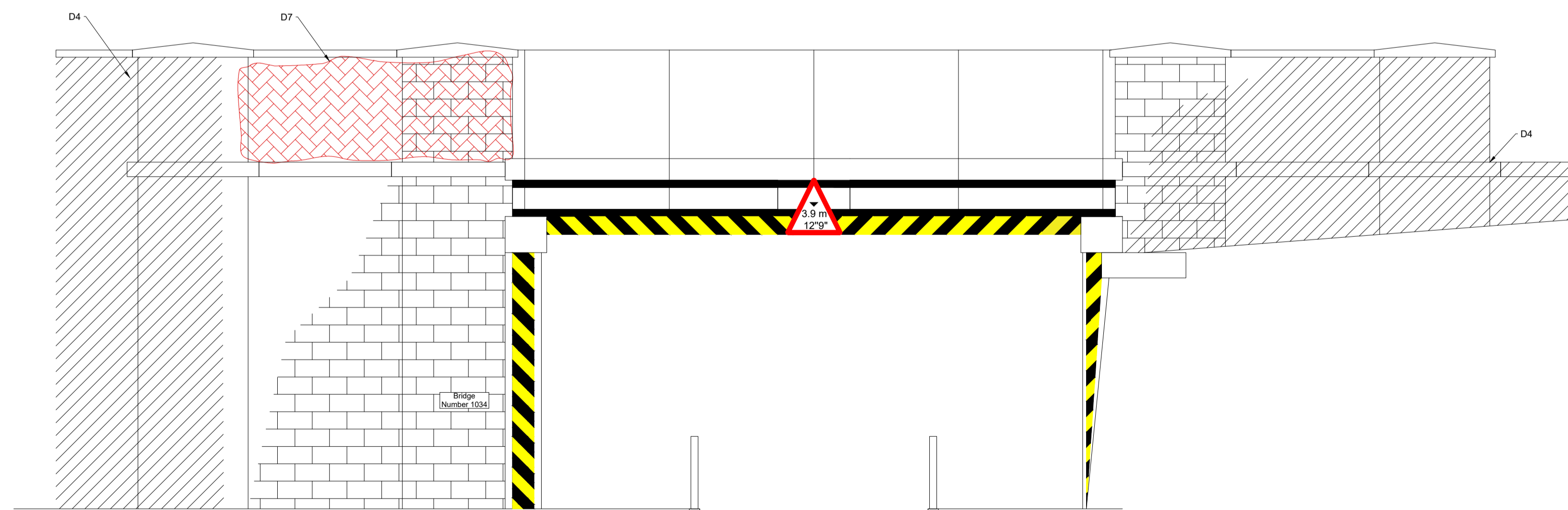
Drawing Number: 10033113-ARC-00-XX-DR-CE-30003  
Revision: P01.2



WEST ABUTMENT (LOW MILEAGE)



EAST ABUTMENT (HIGH MILEAGE)



SOUTH ELEVATION (METRO SIDE)

- NOTES:**
- DO NOT SCALE FROM THIS DRAWING.
  - REMOVE VEGETATION SURROUNDING STRUCTURE AND ROOT SYSTEMS AFFECTING SUBSTRUCTURES TO ENABLE FUTURE INSPECTIONS.
  - POINTING REPAIRS WHERE NECESSARY IN ACCORDANCE WITH NETWORK RAIL STANDARD MASONRY REPAIR DETAILS.
  - REPAIR/STITCH FRACTURES IN SUBSTRUCTURES IN ACCORDANCE WITH NETWORK RAIL STANDARD MASONRY REPAIR DETAILS.
  - FOLLOWING THE REINTRODUCTION OF FREIGHT TRAFFIC TO ALL LINES A MONITORING REGIME IS TO BE PUT IN PLACE TO CHECK THE EFFECTS OF INCREASED LOADINGS UPON THE SUPERSTRUCTURE AND SUBSTRUCTURES.
  - THIS DRAWING IS TO BE READ IN CONJUNCTION WITH THE FORM A DESIGN DOCUMENT.

- LEGEND:**
- BRICKWORK
  - CHEVRONS
  - HIDDEN BY VEGETATION
  - DEFECTS / FRACTURES

Rev	Date	Description	Drawn	Check	Approv
A02		APPROVED		EQ	CD RF

Client **NEXUS**

PROJECT:  
Nexus Metro Flow



Site **Client**  
Pelaw to Jarrow  
Nexus Rail Headquarters  
Gosforth Industrial Estate  
Christon Road  
Newcastle, NE3 1XD  
Phone +44 (0) 19120 220 747  
Fax  
www.nexus.org.uk

**ARCADIS** Design & Consultancy  
for rail and built assets  
Registered office: Apollo House, Eboracum Road, York, YO31 7RE  
Coordinating office: 1st Floor Artemis House, Eboracum Road, York, YO31 7RE  
Tel: +44 (0) 1904 380 750  
www.arcadis.com

TITLE: 1034 - HILL STREET  
SUBSTRUCTURE DEFECTS

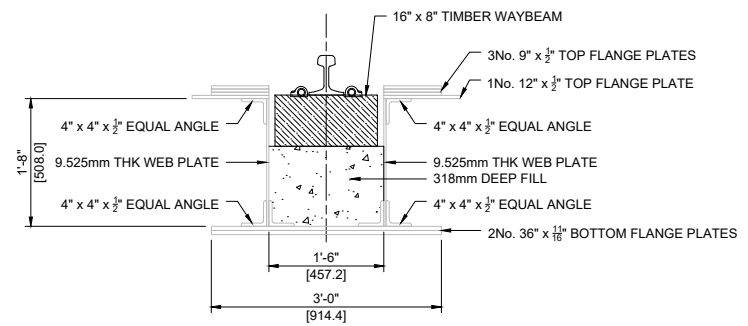
Designed	EQ	Signed	Date
Drawn	EQ	Signed	10/03/2020
Checked	CD	Signed	10/03/2020
Approved	RF	Signed	10/03/2020
Scale:	NTS	Datum:	AOD
Original Size:		Grid:	OS
ELR:		Mileage:	
Suitability Code:	S0	Project Number:	10033113

Suitability Description:  
**WIP**  
NOT FOR CONSTRUCTION

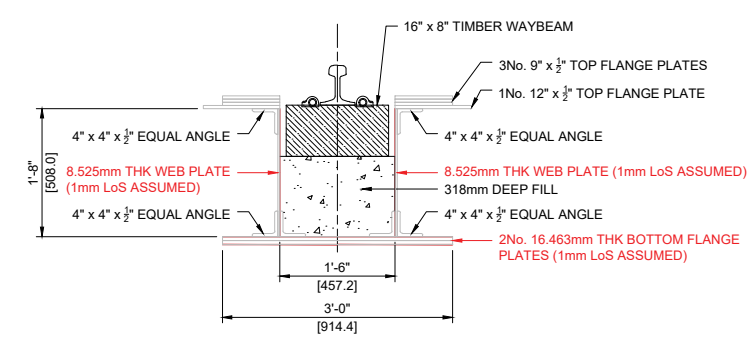
Drawing Number: 10033113-ARC-XX-DU-DR-CB-400001  
Revision: A02

DEFECTS	
DEFECT REF.	DESCRIPTION
D1	SPOT AREAS OF WATER STAINING WITH CALCITE DEPOSITS THROUGH JOINTS THROUGHOUT LENGTH OF GLAZED BRICK SECTION.
D2	SPOT GLAZED BRICKS SPALLING AVERAGE 5 TO 10mm DEEP THROUGHOUT LENGTH ABUTMENT.
D3	ACTIVE WATER PENETRATION THROUGHOUT ABUTMENT.
D4	VEGETATION OVERGROWTH. REMOVE VEGETATION TO ALLOW FOR FUTURE INSPECTIONS.
D5	SPALLING TO 1NO. STONE 120 x 230 x 60mm DEEP.
D6	FULL HEIGHT STEPPED VERTICAL FRACTURE OPEN 2mm, SEVERE WATER PENETRATION. REPAIR IN ACCORDANCE WITH NETWORK RAIL STANDARD MASONRY REPAIR DETAILS.
D7	ACTIVE WATER PENETRATION THROUGHOUT BRICKWORK.
D8	VERTICAL FRACTURE IN JOINTS AND BRICK OPEN HL x 1m HIGH
D9	DIAGONAL STEPPED FRACTURE OPEN HL x 1.8m HIGH
D10	1NO. LOOSE BRICK
D11	7m LONG OPEN JOINT BELOW BEDSTONE
D12	PREVIOUS DE INDICATES 5-20mm DEEP SPALLING. OBSCURED VIA CPB STEELWORK.





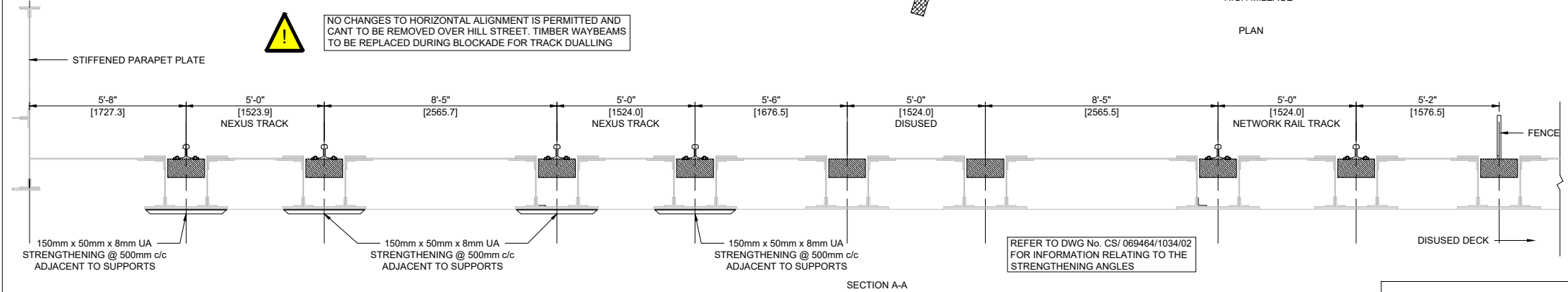
TYPICAL GROSS SECTION OF TROUGH UNIT @ MIDSPAN (NEXUS TRACKS)



TYPICAL NET SECTION OF TROUGH UNIT @ MIDSPAN (NEXUS TRACKS)

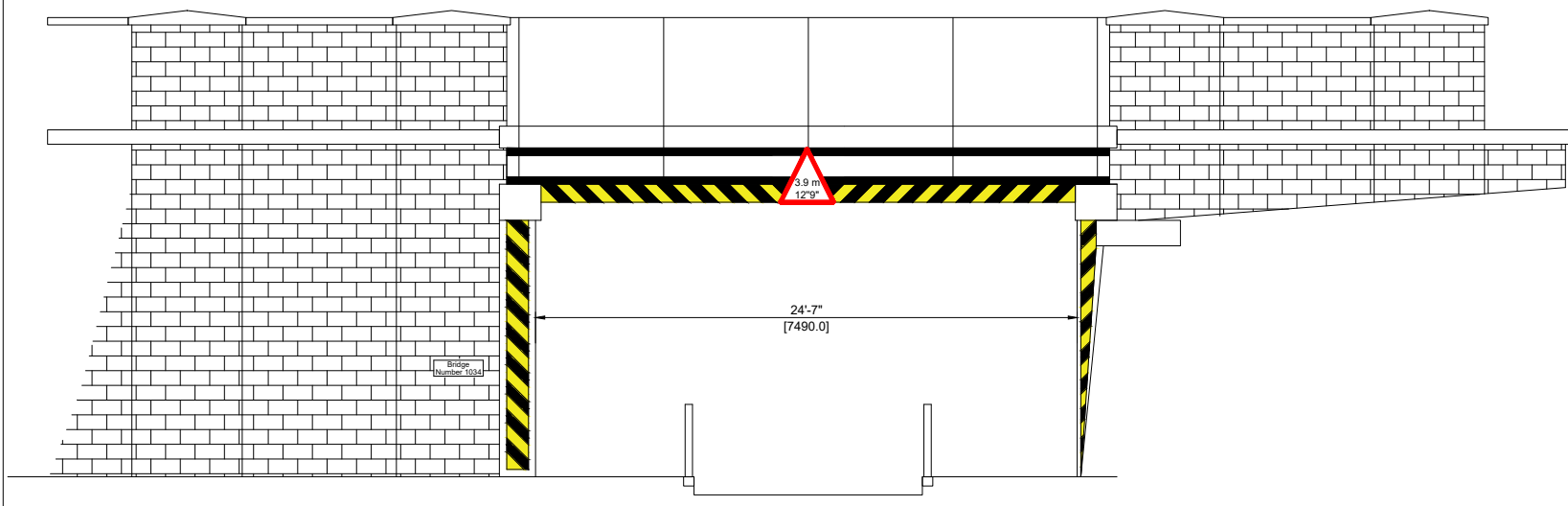


HIGH MILEAGE  
PLAN



SECTION A-A

REFER TO DWG No. CS/ 069464/1034/02 FOR INFORMATION RELATING TO THE STRENGTHENING ANGLES



ELEVATION



- NOTES:**
- THE BRIDGE STRUCTURES ARE TO BE CHECKED AND STRENGTHENED/ REFURBISHED WHERE NECESSARY TO ENSURE CAPABLE OF SAFELY CARRYING RA9 TRAFFIC AT 50mph LINE SPEED.
  - ANY SIGNIFICANT DEFECTS ARE TO BE REPAIRED AS PART OF THE PROPOSED FORM A WORKS.
  - WHERE TRACK CANT IS REMOVED OVER WAYBEAM BRIDGES ALLOWANCE IS TO BE MADE FOR REMOVAL OF EXISTING TIMBER WAYBEAMS AND REPLACEMENT WITH NEW WAYBEAMS AND FIXINGS HOUSED WITHIN EXISTING METALLIC TROUGHS. THE TRACK ALIGNMENT IS TO BE OPTIMISED TO ENSURE MINIMAL AFFECTS ON SIZES OF TIMBERS AND ASSESSED CAPACITY OF STRUCTURES. FULL FABRICATION DETAILS OF WAYBEAMS BASEPLATES AND INFILL TO METALLIC TROUGHS ARE TO BE SUBMITTED AS PART OF DETAILED FORM B DESIGN.
  - CRACKS IN ABUTMENTS TO BE STITCHED AND GROUTED IN ACCORDANCE WITH NETWORK RAIL STANDARD DRAWINGS.
  - ENSURE ALL EXISTING BEARINGS ARE FULLY IN CONTACT AND NOT BOUNCING. CONTRACTOR TO ALLOW FOR GROUTING UP OF BEARING PLATES AND MAKING GOOD TO BEDSTONES AS REQUIRED.
  - REMOVAL OF ALL VEGETATION ROOT SYSTEMS AFFECTING WING WALLS AND ABUTMENTS TO BE CARRIED OUT BY CONTRACTOR.
  - ALLOW FOR CLEANING ALL DEBRIS FROM BEARING SHELVES AND CLEANING OF SURFACE WATER DRAINAGE PIPES AND OUTLETS.
  - EXISTING SURFACE WATER MANHOLES TO BE CLEARED OF DEBRIS.
  - FOLLOWING REINTRODUCTION OF FREIGHT TRAFFIC TO ALL LINES A MONITORING REGIME IS TO BE PUT IN PLACE TO CHECK THE EFFECTS OF INCREASED LOADINGS UPON THE SUPERSTRUCTURES AND SUBSTRUCTURES. IN THE EVENT OF ANY EXCESSIVE MOVEMENTS OR ADDITIONAL CRACKING NEXUS ASSET ENGINEERS ARE TO BE INFORMED. ADDITIONAL STRENGTHENING OR REMEDIAL MEASURES MAY BE PRESCRIBED.

- NOTES:**
- ALL DIMENSIONS ARE IN MILLIMETRES AND ALL LEVELS ARE IN METRES UNLESS NOTED OTHERWISE.
  - DO NOT SCALE FROM THIS DRAWING.
  - RENEWAL OF TIMBER WAYBEAMS TO BE UNDERTAKEN DURING BLOCKADE FOR TRACK DUALLING WORK.
  - NO / MINIMAL CHANGES TO HORIZONTAL ALIGNMENT IS PERMITTED OVER STRUCTURE WITHIN MAINTENANCE TOLERANCES.
  - EXISTING CANT OVER STRUCTURE TO BE REMOVED IN ACCORDANCE WITH TRACK DESIGN WITH MINIMAL IMPACT ON SIZES OF THE NEW WAYBEAMS.
  - THIS DRAWING IS TO BE READ IN CONJUNCTION WITH THE FORM A DESIGN DOCUMENT.

- LEGEND:**
- BRICKWORK
  - CONCRETE / FILL
  - TIMBER WAYBEAMS

Rev	Date	Description	Drawn	Check	Approv
P01.2	10/03/20	For Approval			

**Client** NEXUS

**PROJECT:** Nexus Metro Flow

**Site** Pelaw to Jarrow

**Client** Nexus Rail Headquarters  
Gosforth Industrial Estate  
Christon Road  
Newcastle, NE3 1XD  
Phone +44 (0) 19120 220 747  
Fax  
www.nexus.org.uk

Registered office: Apollo House, Eboracum Road, York, YO31 7RE  
Coordinating office: 1st Floor Artemis House, Eboracum Road, York, YO31 7RE  
Tel: +44 (0) 1904 380 750  
www.arcadis.com

**TITLE:** Hill Street - General Arrangement

Designed	Sign	Date
Drawn	K.Baxter	09/03/20
Checked	C.Doyle	10/03/20
Approved	C.Doyle	10/03/20

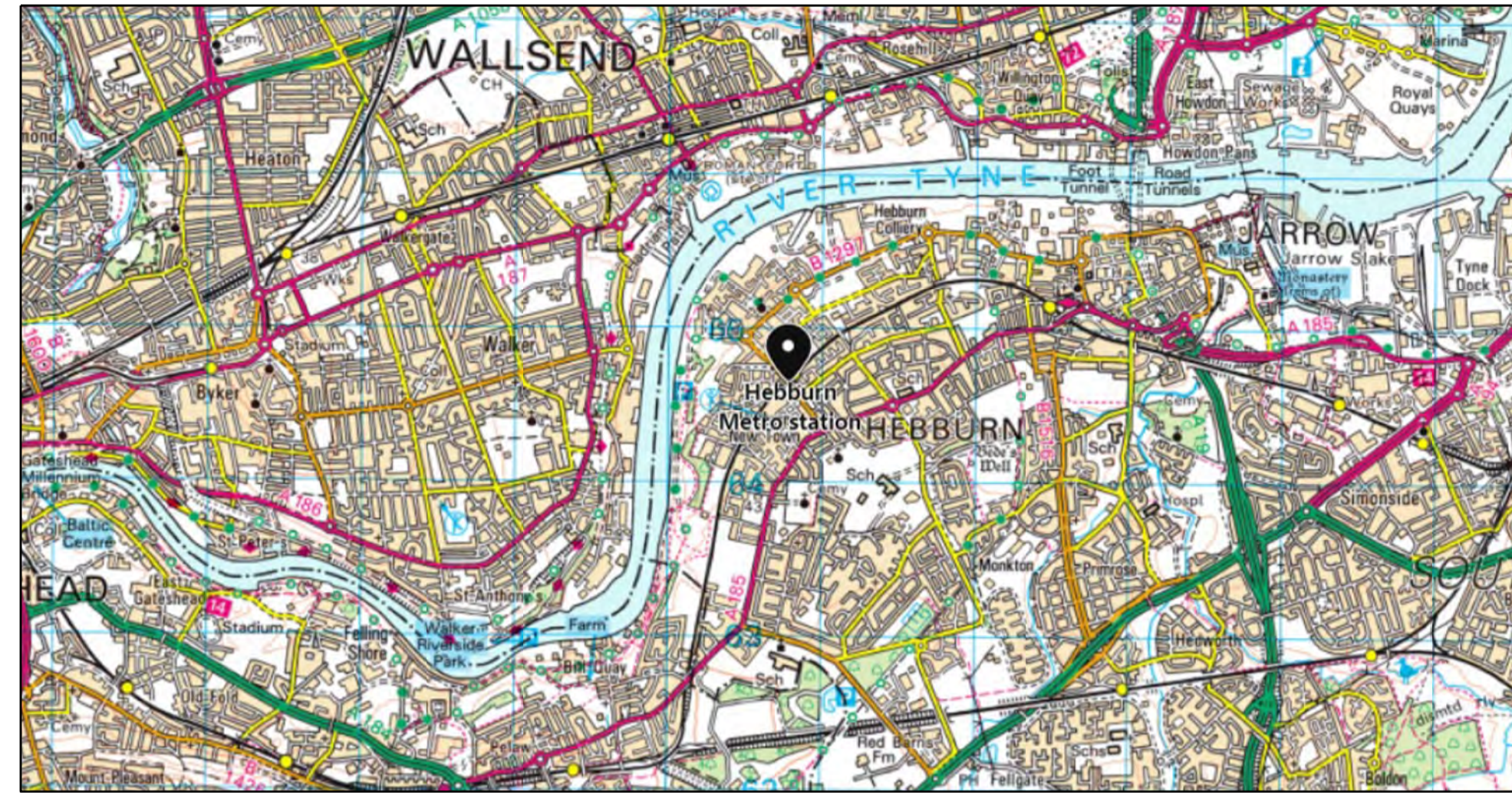
Scale: AOD  
Original Size: OS  
ELR: Mileage: 10033113  
Suitability Code: S2  
Project Number: 10033113

Suitability Description:  
**Fit for Information**  
NOT FOR CONSTRUCTION

Drawing Number: 10033113-ARC-XX-DR-CE-40002  
Revision: P01.2



HEBBURN STATION PLATFORM 1  
NTS



LOCATION MAP  
NTS

**GENERAL HAZARDS**

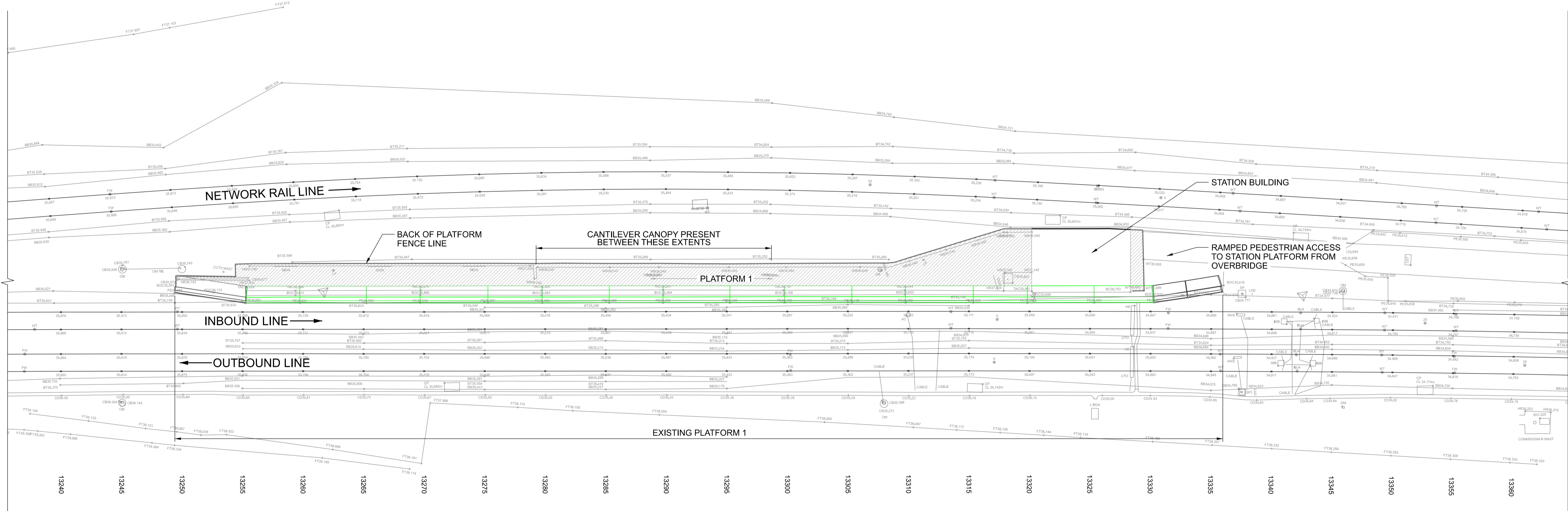
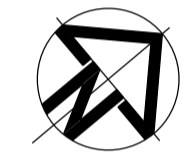
G! M! V!

HAZARD SUMMARY TABLE	
SIGNIFICANT DESIGNER'S IDENTIFIED HAZARDS	LIFE SAVING RULES
FOR MORE DETAILED INFORMATION ON THE HIGHLIGHTED HAZARDS, REFER TO DESIGNER'S RISK ASSESSMENT FOR THIS PROJECT.	
'EVERYDAY' LOW RISK HAZARDS AND THOSE HAZARDS WHICH SHOULD BE OBVIOUS TO A COMPETENT CONTRACTOR HAVE NOT BEEN INDICATED ON THIS DRAWING.	
SHOULD ANY ADDITIONAL HAZARDS BE IDENTIFIED DURING THE COURSE OF THE WORKS, THE CONTRACTOR SHALL NOTIFY ALL RELEVANT MEMBERS OF THE PROJECT TEAM	
G!	WORKING ON A PLATFORM EDGE WITHIN A LIVE RAILWAY ENVIRONMENT.
M!	WORKS ARE TO AN OPERATIONAL PLATFORM. SITE TO BE LIFT CLEAN AND TIDY AT THE END OF EACH SHIFT.
V!	IMPACT OF THE PROPOSED WORKS ON THE EXISTING SUBSTRUCTURE.
• FOR MORE DETAILED INFORMATION PLEASE REFER TO THE DESIGNER'S H&S RISK ASSESSMENT REF.: 10033113-ARC-XX-ZZ-RP-CE-000001.	

- NOTES:**
- DO NOT SCALE CONTRACTOR TO CHECK ALL DIMENSIONS AND REPORT ANY OMISSIONS OR ERRORS.
  - ALL DIMENSIONS IN MILLIMETRES UNLESS NOTED OTHERWISE. ALL LEVEL IN METERS.
  - ORIGINAL TOPOGRAPHIC AND PLATFORM GAUGING SURVEY CARRIED BY PBH SURVEYS IN AUTUMN 2019.
  - REFER TO ASSOCIATED DRAWINGS FOR FURTHER DETAILS.  
10033113-ARC-00-XX-DR-CE-50001  
10033113-ARC-00-XX-DR-CE-50002  
10033113-ARC-00-XX-DR-CE-50003  
10033113-ARC-00-XX-DR-CE-50004  
10033113-ARC-00-XX-DR-CE-50005  
10033113-ARC-00-XX-DR-CE-50006  
10033113-ARC-00-XX-DR-CE-60001  
10033113-ARC-00-XX-DR-CE-60002  
10033113-ARC-00-XX-DR-CE-60003  
10033113-ARC-00-XX-DR-CE-60004

**LEGEND:**

	- EXISTING
	- MODIFIED EXISTING
	- DEMOLISHED / REMOVED EXISTING
	- PROPOSED



PLAN  
1:200

**Client** NEXUS

**PROJECT:** Nexus Metro Flow

**Site** Pelaw to Jarrow

**Client** Nexus Rail Headquarters  
Cosforth Industrial Estate  
Christon Road  
Newcastle, NE3 1XD  
+44 (0)19120 220 747  
www.nexus.org.uk

**ARCADIS** Design & Consultancy for natural and built assets

Registered office: Arcadis House, 34 York Way, London N1 9AB

Coordinating office: 410 Whittle House, The Quadrant Near Birchwood, Warrington, WA3 6FW, Tel: 44 (0)1925 843400

www.arcadis.com

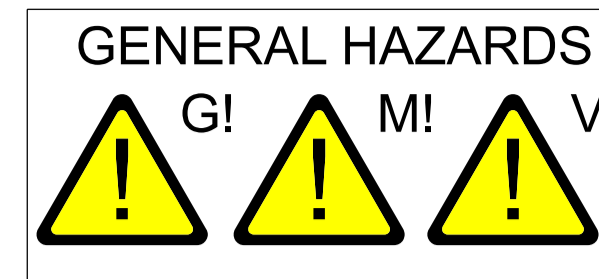
**TITLE:** HEBBURN STATION PLATFORM 1 EXISTING ARRANGEMENT

Designed	G. Gilbert	Signed	16/01/20
Drawn	D.Little	Signed	16/01/20
Checked	A.Kitching	Signed	16/01/20
Approved	C.Doyle	Signed	16/01/20
Scale:	AS SHOWN	Datum:	---
Original Size:	A1	Grid:	---
ELR:	N/A	Mileage:	N/A
Suitability Code:	S3	Project Number:	10033113

Suitability Description: Fit for Review and Comment

Drawing Number:	10033113-ARC-00-XX-DR-CE-50001	Revision:	A01
-----------------	--------------------------------	-----------	-----



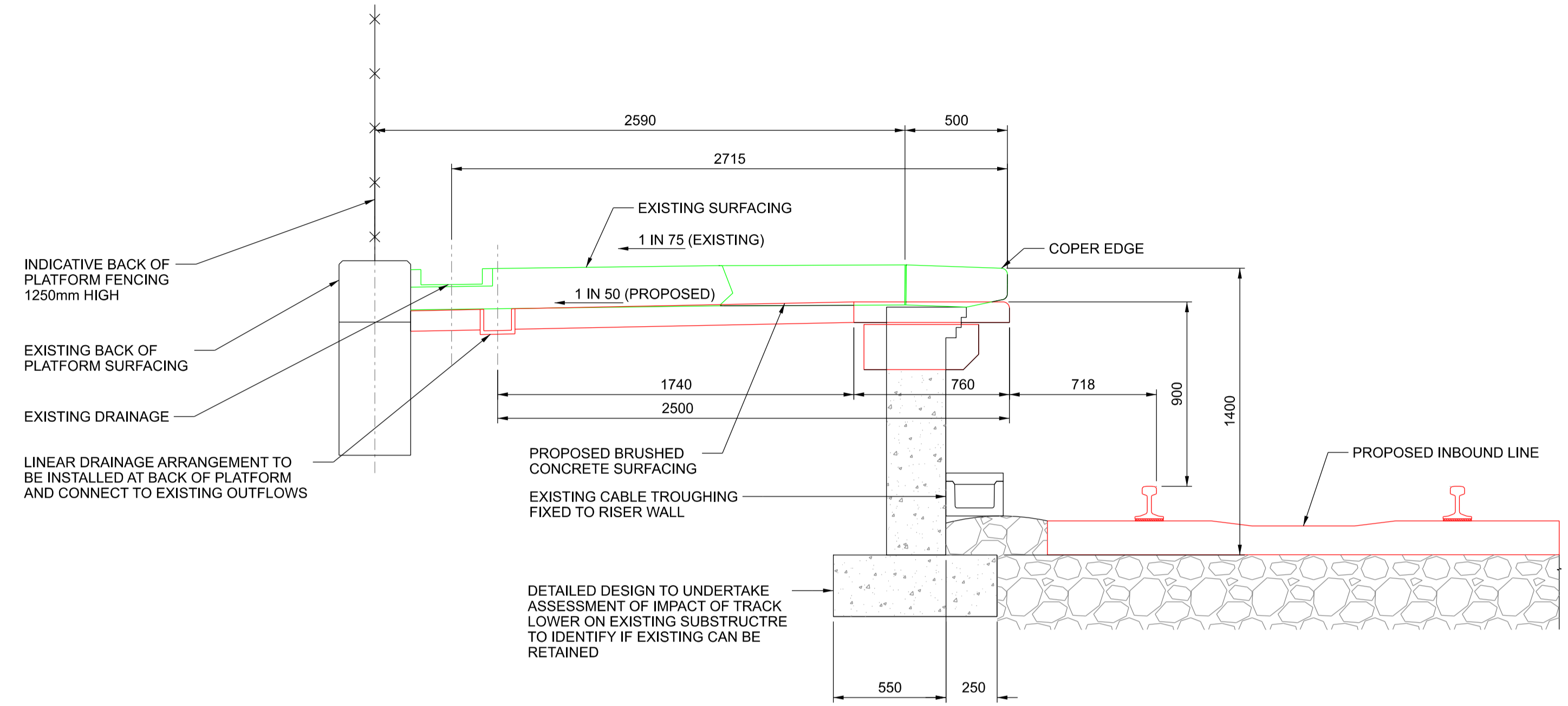


HAZARD SUMMARY TABLE	
SIGNIFICANT DESIGNER'S IDENTIFIED HAZARDS	LIFE SAVING RULES
FOR MORE DETAILED INFORMATION ON THE HIGHLIGHTED HAZARDS, REFER TO DESIGNER'S RISK ASSESSMENT FOR THIS PROJECT.	
'EVERYDAY' LOW RISK HAZARDS AND THOSE HAZARDS WHICH SHOULD BE OBVIOUS TO A COMPETENT CONTRACTOR HAVE NOT BEEN INDICATED ON THIS DRAWING.	
SHOULD ANY ADDITIONAL HAZARDS BE IDENTIFIED DURING THE COURSE OF THE WORKS, THE CONTRACTOR SHALL NOTIFY ALL RELEVANT MEMBERS OF THE PROJECT TEAM	
G!	WORKING ON A PLATFORM EDGE WITHIN A LIVE RAILWAY ENVIRONMENT.
M!	WORKS ARE TO AN OPERATIONAL PLATFORM. SITE TO BE LIFT CLEAN AND TIDY AT THE END OF EACH SHIFT.
V!	IMPACT OF THE PROPOSED WORKS ON THE EXISTING SUBSTRUCTURE.
• FOR MORE DETAILED INFORMATION PLEASE REFER TO THE DESIGNER'S H&S RISK ASSESSMENT REF.: 10033113-ARC-XX-ZZ-RP-CE-000001.	

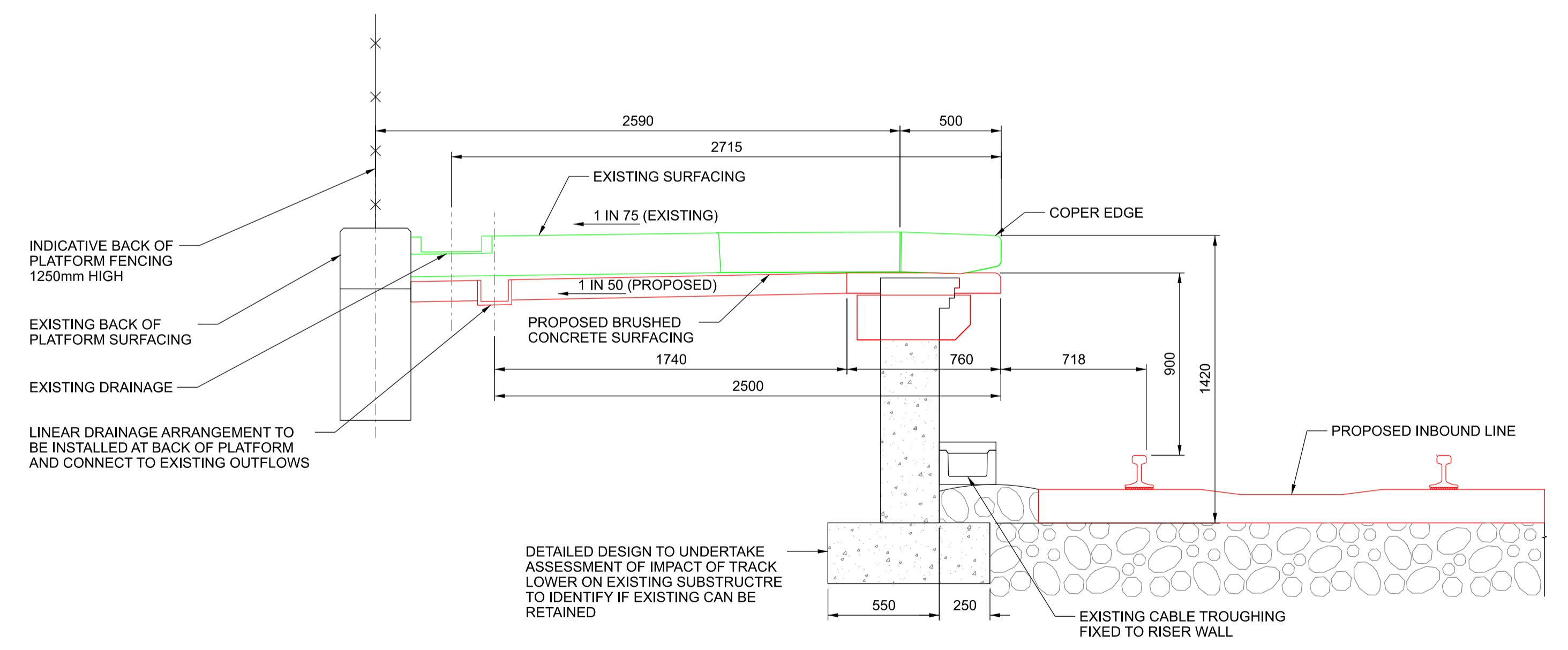
- NOTES:**
- DO NOT SCALE CONTRACTOR TO CHECK ALL DIMENSIONS AND REPORT ANY OMISSIONS OR ERRORS.
  - ALL DIMENSIONS IN MILLIMETRES UNLESS NOTED OTHERWISE. ALL LEVEL IN METERS.
  - ORIGINAL TOPOGRAPHIC AND PLATFORM GAUGING SURVEY CARRIED BY PBH SURVEYS IN AUTUMN 2019.
  - REFER TO ASSOCIATED DRAWINGS FOR FURTHER DETAILS  
 10033113-ARC-00-XX-DR-CE-50001  
 10033113-ARC-00-XX-DR-CE-50002  
 10033113-ARC-00-XX-DR-CE-50003  
 10033113-ARC-00-XX-DR-CE-50004  
 10033113-ARC-00-XX-DR-CE-50005  
 10033113-ARC-00-XX-DR-CE-50006  
 10033113-ARC-00-XX-DR-CE-60001  
 10033113-ARC-00-XX-DR-CE-60002  
 10033113-ARC-00-XX-DR-CE-60003  
 10033113-ARC-00-XX-DR-CE-60004

**LEGEND:**

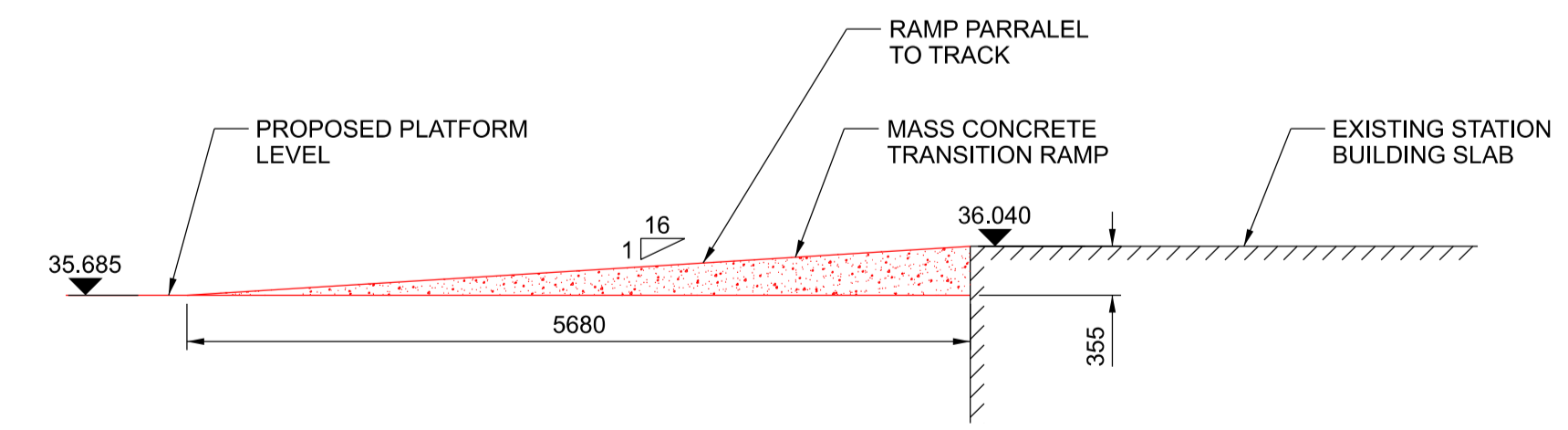
	- EXISTING
	- MODIFIED EXISTING
	- DEMOLISHED / REMOVED EXISTING
	- PROPOSED



**PLATFORM 1 TYPICAL SECTION DETAILS**  
1:20  
AT CHAINAGE 13273



**PLATFORM 1 TYPICAL SECTION DETAILS**  
1:20  
AT CHAINAGE 13312



**SECTION A - PLATFORM 1 TRANSITION RAMP**  
1:50

**Client** NEXUS

**PROJECT:** Nexus Metro Flow

**Site** Pelaw to Jarrow

**Client** Nexus Rail Headquarters  
Gosforth Industrial Estate  
Christon Road  
Newcastle, NE3 1XD  
+44 (0)19120 220 747  
www.nexus.org.uk

**ARCADIS** Design & Consultancy for natural and built assets

Registered office: Arcadis House, 34 York Way, London N1 9AB

Coordinating office: 1st Floor, Artemis House, Eboracum Way, York YO31 7RE, Tel: +44 (0)1904 380 750

www.arcadis.com

**TITLE:** HEBBURN STATION PLATFORM 1 PROPOSED ARRANGEMENT SECTIONS

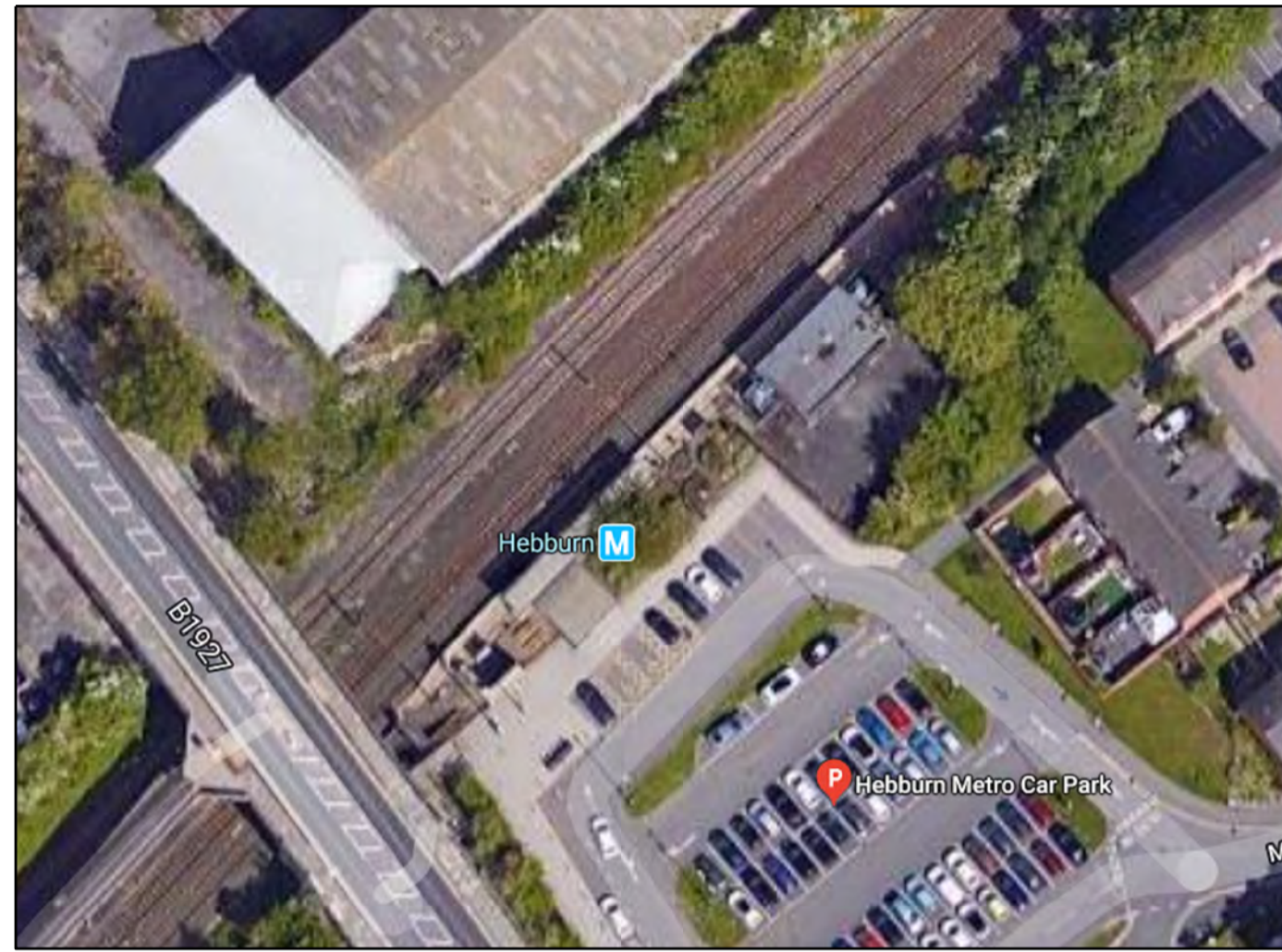
Designed	G. Gilbert	Signed	16/01/20
Drawn	D.Little	Signed	16/01/20
Checked	A.Kitching	Signed	16/01/20
Approved	C.Doyle	Signed	16/01/20

Scale: 1:20 Datum: ---  
 Original Size: A1 Grid: ---  
 ELR: N/A Mileage: N/A

Suitability Code: S3 Project Number: 10033113

Suitability Description: Fit for Review and Comment

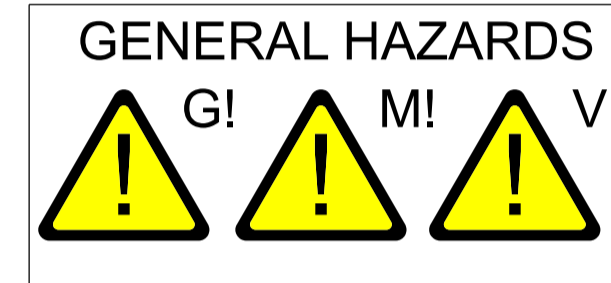
Drawing Number: 10033113-ARC-00-XX-DR-CE-50003  
 Revision: A01



HEBBURN STATION PLATFORM 2  
NTS



LOCATION MAP  
NTS



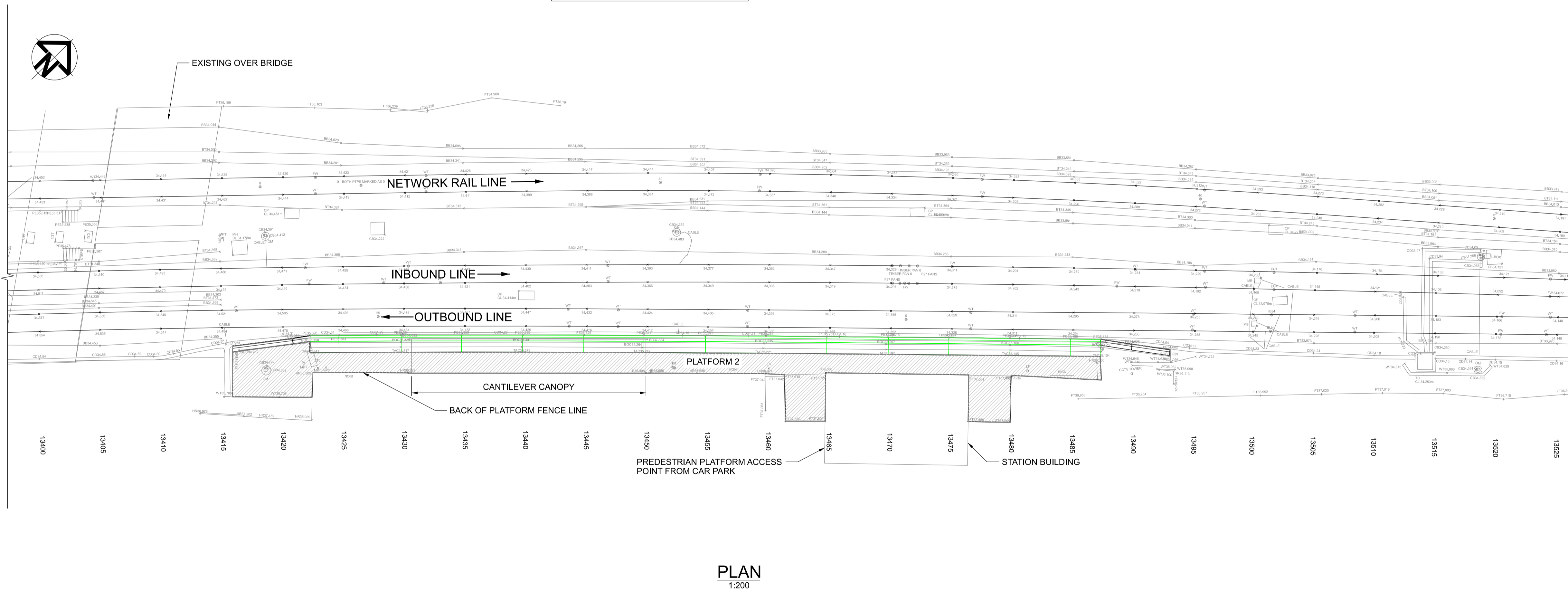
GENERAL HAZARDS  
G! M! V!

HAZARD SUMMARY TABLE	
SIGNIFICANT DESIGNER'S IDENTIFIED HAZARDS	LIFE SAVING RULES
FOR MORE DETAILED INFORMATION ON THE HIGHLIGHTED HAZARDS, REFER TO DESIGNER'S RISK ASSESSMENT FOR THIS PROJECT.	
'EVERYDAY' LOW RISK HAZARDS AND THOSE HAZARDS WHICH SHOULD BE OBVIOUS TO A COMPETENT CONTRACTOR HAVE NOT BEEN INDICATED ON THIS DRAWING.	
SHOULD ANY ADDITIONAL HAZARDS BE IDENTIFIED DURING THE COURSE OF THE WORKS, THE CONTRACTOR SHALL NOTIFY ALL RELEVANT MEMBERS OF THE PROJECT TEAM	
G!	WORKING ON A PLATFORM EDGE WITHIN A LIVE RAILWAY ENVIRONMENT.
M!	WORKS ARE TO AN OPERATIONAL PLATFORM. SITE TO BE LIFT CLEAN AND TIDY AT THE END OF EACH SHIFT.
VI	IMPACT OF THE PROPOSED WORKS ON THE EXISTING SUBSTRUCTURE.
FOR MORE DETAILED INFORMATION PLEASE REFER TO THE DESIGNER'S H&S RISK ASSESSMENT REF.: 10033113-ARC-XX-ZP-CE-000001.	

- NOTES:**
- DO NOT SCALE CONTRACTOR TO CHECK ALL DIMENSIONS AND REPORT ANY OMISSIONS OR ERRORS.
  - ALL DIMENSIONS IN MILLIMETRES UNLESS NOTED OTHERWISE. ALL LEVEL IN METERS.
  - ORIGINAL TOPOGRAPHIC AND PLATFORM GAUGING SURVEY CARRIED BY PBH SURVEYS IN AUTUMN 2019.
  - REFER TO ASSOCIATED DRAWINGS FOR FURTHER DETAILS  
10033113-ARC-00-XX-DR-CE-50001  
10033113-ARC-00-XX-DR-CE-50002  
10033113-ARC-00-XX-DR-CE-50003  
10033113-ARC-00-XX-DR-CE-50004  
10033113-ARC-00-XX-DR-CE-50005  
10033113-ARC-00-XX-DR-CE-50006  
10033113-ARC-00-XX-DR-CE-60001  
10033113-ARC-00-XX-DR-CE-60002  
10033113-ARC-00-XX-DR-CE-60003  
10033113-ARC-00-XX-DR-CE-60004

**LEGEND:**

	- EXISTING
	- MODIFIED EXISTING
	- DEMOLISHED / REMOVED EXISTING
	- PROPOSED



PLAN  
1:200

Rev	Date	Description	Drawn	Check	Appr
A01	16/01/20	First Issue		DL	AK CD

**Client** NEXUS

**PROJECT:** Nexus Metro Flow

**Site** Pelaw to Jarrow

**Client** Nexus Rail Headquarters  
Gosforth Industrial Estate  
Christon Road  
Newcastle, NE3 1XD  
+44 (0)19120 220 747  
www.nexus.org.uk

**ARCADIS** Design & Consultancy for natural and built assets

Registered office: Arcadis House, 34 York Way, London N1 9AB

Coordinating office: 1st Floor, Artemis House, Eboracum Way, York YO31 7RE  
Tel: +44 (0)1904 380 750

www.arcadis.com

**TITLE:** HEBBURN STATION PLATFORM 2 EXISTING ARRANGEMENT

Designed	G. Gilbert	Signed	DM	Date	16/01/20
Drawn	D.Little	Signed	DM	Date	16/01/20
Checked	A.Kitching	Signed	DM	Date	16/01/20
Approved	C.Doyle	Signed	DM	Date	16/01/20
Scale:	AS SHOWN	Datum:	---		
Original Size:	A1	Grid:	---		
ELR:	N/A	Mileage:	N/A		
Suitability Code:	S3	Project Number:	10033113		
Suitability Description: Fit for Review and Comment					
Drawing Number:	10033113-ARC-00-XX-DR-CE-50004				Revision:
					A01